



Short Breaks for Disabled Children

Summer 2025 newsletter



London Borough
of Hounslow

FREE Summer holiday
Short Breaks inside!

Welcome



Welcome to the Summer newsletter! You will find inside a programme of activities taking place over the holiday which will be fun and enjoyable for your young person and the whole family.

Don't forget to give your HAF codes (if you receive one from your child's school) when making bookings – the more codes we can collect, the more funding we will receive for activities later in the year. The HAF (Holiday Activities and Food) programme is open to all families who receive benefits-related Free School Meals. The voucher will come from your child's school and can be used in the HAF programme itself and Short Breaks.

Hope you all have a great holiday!

Jo Dawson and Collin Hazeley – Short Breaks

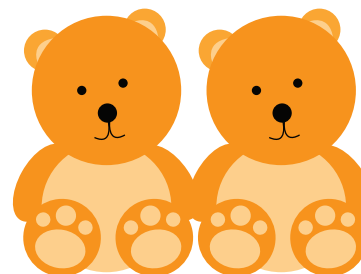
SHORT BREAKS BOOKING PROCEDURE – please read

This newsletter has been sent to families on Wednesday 25 June and families will be able to book Short Breaks as from the week commencing 30 June. No bookings will take place before Tuesday 1 July.

Tuesday 1 July	Pathway	3
Wednesday 2 July	Pathway	3
Thursday 3 July	Pathways	2 3
Friday 4 July	Pathways	2 3
Monday 7 July	Pathways	1 2 3
Tuesday 8 July	Pathways	1 2 3

If you have any questions or are unsure which pathway your child meets, please do not hesitate to contact the Short Breaks Team on 020 8583 3636. **Please note that we are unable to do any registrations during the booking period.**

What is a Short Break?



Short breaks provide opportunities for disabled children and young people to spend time away from their primary carers. They aim to provide parents and carers a necessary and valuable break away from their caring responsibilities in order to recharge their batteries.

They enable disabled children and young people to have the chance to develop new friendships, take part in new experiences and to have fun doing positive activities like sports, music therapy, youth clubs and much more.

A short break may include a few hours, a day, evening, overnight stay, weekend or sometimes longer. It could take place in the family home, at another home or out in the wider community.

Hounslow Short Breaks team also endeavour to provide short breaks for the whole family in an environment that is sympathetic to the disabled child or young person, for example, theatre shows and cinema screenings.

For more information, please see our Short Breaks Statement on the Hounslow website – www.hounslow.gov.uk/shortbreaks under 'Downloads'.

If you have any queries, please do call the Short Breaks team on 020 8583 3636.

Taxicards

This scheme allows London residents with a mobility impairment which prevents them from using buses or trains to travel in contracted licensed radio taxis – black cabs or private hire vehicles at subsidised rates. For further information visit www.londoncouncils.gov.uk/services/taxicard



Unique Identifying Number (UIN)



If you have not already registered for your UIN, please do call the Short Breaks team on **020 8583 3636**. It is important that you do this as you will need a UIN to book onto any of the Short Breaks programme. All our Short Breaks providers (Hounslow Play team, Brentford Sports, Feltham Bees, Richmond Music Trust, Watermans, Griffin Park Learning Zone, Park Lane Stables) will require the UIN as part of the booking process.

Please note that we are unable to do any registrations during booking days.

SUPPORT

If your child or young person needs help to access short breaks, support is available!

Please do call the **Short Breaks team** on **020 8583 3636**.



Hounslow Parent Carers Forum

Hounslow Parent Carers Forum is part of a nationwide organisation that helps parent and carers of children with Special Educational Needs and Disabilities (SEND). We are there to listen to you and try to support you to sign post where needed.

We also discuss common issues that parent/carers have with the local authority and other organisations in order to help improve services. All of us who work for the forum have children with SEND.

We offer Coffee & Chat Mornings and Afternoons, along with newsletters that provide updates and helpful information on SEN topics in the area. Additionally, we host a monthly forum



where representatives from the Council, other organisations, and charities come to discuss their services and answer your questions. Best way to keep up to date with what we have going on is to see our online diary on our website - www.hounslowpcf.co.uk

Dates for up-coming Forum meetings are as follows:

- Tuesday 15 July
- Tuesday 16 September
- Tuesday 21 October

Times: 10.15am-12.30am

Hounslow Youth Centre

Kingsley Road, Hounslow, Middlesex TW3 1QA

Email: info@hounslowpcf.co.uk

Tel: 020 8570 4671



Tuesday 15 July Parent/Carer Forum

– Come and Talk Short Breaks!!

The Short Breaks contract with providers is due for renewal starting 1 April 2026 and we are going out to tender in the autumn of 2025. Before this process starts, we want to talk to parent/carers about the service – what you like or don't like about the service, what we can do better, what are the gaps, what is working well or not – so that we can include this feedback into all the material that will be produced for potential providers for the tender process and the programme going forward.

If you can make it, it would be great to see you and any feedback is greatly appreciated.

10.15am – 12.30pm
Hounslow Youth Centre

Address: Kingsley Road, Hounslow TW3 1QA

Useful websites for families of disabled children

Please find below several websites that offer help and support in various ways to families with disabled children:

<http://newlifecharity.co.uk/docs/care-services/Play-Therapy-Pods.shtml>

<https://www.disability-grants.org/grants-for-children.html>

<https://www.turn2us.org.uk/>

SEND Local Offer

FEBRUARY

Tuesday, 11 February

Feltham Assembly Hall, TW14 9DN

11.30am - 1.30pm

MARCH

Thursday, 13 March

Hounslow House, TW3 3EB

11.30am - 1.30pm

APRIL

Wednesday, 23 April

Redlees Play Centre, TW7 6DW

10am - 12pm

MAY

Friday, 16 May

Brentford Library, TW8 8DW

10am - 12pm

JUNE

Wednesday, 18 June

Feltham Library, TW13 4GU

11.30am - 1.30pm

JULY

Thursday, 10 July

Lampton Family Hub, TW3 4JG

4pm - 6pm

Advice, guidance and support for families with children and young people aged 0 - 25 with Special Educational Needs and Disabilities (SEND).



Scan here to visit our Local Offer website



Realising

Limitless

Futures



London Borough
of Hounslow

Visit www.hounslow.gov.uk/send-local-offer
Email thelocaloffer@hounslow.gov.uk

Hounslow Short Breaks – Summer

Skylarks Hounslow is opening soon!

The new Skylarks site, based at Inwood Park is getting ready for opening, with construction work being completed before the opening later this summer.

Skylarks is an independent charity which provides activities, therapies and support for children with disabilities and additional needs and their entire families. Demand for our services is increasing all the time and especially in Hounslow, where we are now expanding to meet the needs of more families. With thanks to our many supporters and funders, this is now happening!

In addition to our existing base in Twickenham, Skylarks will have a new home in Hounslow, offering free and inclusive services that make a real difference to families.

In partnership with Sky, a state-of-the-art tech hub will enable children to take part in online coding and life skills courses, building life and employability skills.

Working with other local charity partners, Skylarks will provide much-needed advice

and support to parents, while their children explore and stimulate their senses in our dedicated sensory room and play room. At Skylarks Hounslow, families can take part in:

-  Fun, inclusive activities for all ages
-  Expert-led therapies and support sessions
-  Friendly advice and guidance when you need it most
-  Workshops to build confidence and life skills
-  All delivered in a fully accessible, welcoming environment, free of charge!

This is more than just a new location, it's a warm, welcoming space where families affected by SEND can connect, feel part of a community and thrive together. Families can register with us and then start using our services, all of which are free of charge.

We're counting down the days until we open our doors. Follow us on social media for more updates!

We can't wait to welcome you soon!

Register to use our services:
www.skylarks.charity/register



 @Skylarks.Charity

 @SkylarksCharity



Special Educational Needs and Disability Information, Advice and Support Service (SEND IASS)

What is SEND IASS?

Under the Children and Families Act (2014) it is a legal requirement that all Local Authorities have a Special Educational Needs and Disabilities Information Advice and Support Service (SENDIASS).

The Hounslow Special Educational Needs and Disabilities Information Advice and Support Service (SENDIASS) provides this service for parents and carers of children and young people with special educational needs and disabilities (SEND) in the borough.

This service is also offered directly to young people as well. While the service is funded by the London Borough of Hounslow (LBH), Hounslow SENDIASS works independently of the local authority.

Hounslow SENDIASS is free to use, impartial and confidential.



What we do

Hounslow SENDIASS provides independent and impartial advice based on the law and government guidance. We are able to:

- Meet with you virtually or in person to discuss your concerns or needs. Communication may also be by phone and email
- Explain how the SEND system works – for instance, accessing Education, Health, and Care (EHC) plans
- Assist you in navigating the often-complex world of SEND
- Signpost you to appropriate local authority services, including the Local Offer
- Support you through dispute resolution and mediation processes with schools and the local authority

(NB. Where you request support at a meeting, this is subject to appropriateness, availability, and capacity)



What we don't do

Our aim is to empower young people, parents, and carers to take informed decisions around SEND for themselves. We don't however:

- Tell you what is best for you and your child
- Tell other professionals what to do
- Identify appropriate schools for your child
- Represent you at meetings, including mediation and tribunals
- Assist in the preparation of EHC or tribunal documentation
- Provide an administrative service for you, including contacting or arranging meetings for you with other professionals and form-filling
- Help with benefit claims, housing difficulties, Blue Badges etc

(NB. If your child has an EHC plan, your first contact should be your child's EHC caseworker)



You can help us by:

- Leaving a message when you phone as we do not respond to missed calls where no message has been left (We aim to respond to all enquires within 5 working days)
- Keep us updated on progress in relation to the resolution of your concerns or needs
- Let us know when your issues have been resolved

Data Protection

All the information that Hounslow SENDIASS gathers from you is securely stored electronically and separate to local authority departments. Information will only be shared with your permission. However, where there may be a safeguarding concern Hounslow SENDIASS is obliged to share such concerns with appropriate professionals.

How to access our service

We are a self-refer service. Parents are able to access us directly. We are unable to take referrals from professionals.

If you would like our help, please telephone us on 020 8583 2607 or email us at sendiass@hounslow.gov.uk

Disability Access Fund (DAF)

DAF is available to support children with special educational needs and disabilities (SEND) in their childcare setting. Childcare providers can receive £615 per year for every child who meets the eligibility criteria.

Who is eligible?

To be eligible children must be:

- aged 3 or 4 years old
- using a funded free early education and childcare place in a registered childcare setting
- in receipt of Disability Living Allowance (DLA)*



What can the funding be used for?

The funding is available to help childcare providers make reasonable adjustments at their setting to improve children's access to funded early education. It will be paid directly to the childcare provider and they will be able to decide how it should be spent. The funding cannot be used towards childcare fees.

Your child does not need to be using all of their funded early education and childcare hours for their childcare provider to be able to receive the full £615 of funding. Please speak to your childcare provider if you think your child may qualify.

Further information on DAF can be found on the Hounslow Local Offer through the following link: <https://beta.hounslow.gov.uk/send-local-offer>

* Many parents miss out on this vital benefit - did you know that you don't have to wait for a condition to be diagnosed before you can claim DLA for your child? You can claim DLA so long as it is clear that there is some underlying condition - whether physical, mental or behavioural - as a result of which your child needs extra care or help in getting around. For more information, visit www.gov.uk/disability-living-allowance-children.

Eligibility Criteria

You will see the table which describes the pathways of need overleaf, on pages 12-13. Below, we have explained how to assess your child's needs in relation to the pathways.

Step 1: Have a look at Band A and see where your child's disability sits in each pathway.

Step 2: Have a look at Bands B and C if they apply. Think about the four dimensions – Communication, Personal Care, Safety and Supervision, Behaviour and Social Integration. If your child meets one or more of the descriptions in either Band B and C, then they are likely to meet the respective pathway.

If you are unsure or if you see that they sit in multiple pathways, please do give the Short Breaks team a call and we will go through it with you on 020 8583 3636.

Things to think about:

Pathway 1: The child will most likely attend a mainstream school and can access most mainstream activities with minimal support.

Pathway 2: The child will either attend a mainstream school (with specialist support) or attend a specialist school and will need some additional support to access short breaks. They may have an Education, Health and Care Plan.

Pathway 3: The child will most likely attend a specialist school and require specialist support to access short breaks. They will most likely have an Education, Health and Care Plan. They will most likely be known to the Social Work team for Children with Disabilities.

The pathway for the child or young person may change at different times throughout their lives as their needs may change.

Pathways of Need

	Dimension	Pathway 1 Level of Need	Pathway 2 Level of Need	Pathway 3 Level of Need
Band A	Mobility	Able to walk unassisted, but with difficulty or poor co-ordination.	Walks, but only with aids or assistance. May use a wheelchair sometimes.	Full time wheelchair user and/or Mobility severely restricted without special provision.
	Vision	Severe or profound problem with one eye. Less than half visual field loss. Able to function independently.	Able to read print with simple aids or assistance. Defect of at least half visual field. May be eligible for registration as partially sighted.	Unable to read large print without intensive educational assistance or sophisticated aids. Registered.
	Hearing	Severe or profound hearing loss in one ear. Hearing loss 20-40 dB	Hearing loss 41-70 dB	Hearing loss >71 dB
	Functioning and Learning ability	Overall functioning slightly below expected level for age. May have a mild or moderate learning disability	Overall functioning around half expected level for age. Has a moderate learning disability	Overall functions significantly below expected level for age. Have a severe learning disability or a moderate learning disability and diagnosed ASD.
	Health	Known health condition, which is under control but occasionally interferes with everyday activities in a minor way.	Health condition that limits normal activities, including self-care and personal hygiene, access to services. May interfere with opportunities for development or education.	Diagnosed health condition, which is severe and potentially life threatening, and results in frequent hospital admissions that limits accessing developmental or educational activities. May be in receipt of Continuing Care or palliative care from Health Services.

IMPACT OF DISABILITY

Band B	Communication	Delayed language development only.	Delayed/ disorganised verbal communication causing difficulty. Speech supplemented by alternate communication method.	Uses communication other than words, e.g. symbols, makaton, BSL.
	Personal care	Child requires minimal support beyond that of their peers with everyday care needs; this will include toileting, washing and dressing.	Child requires practical support beyond that of their peers with everyday care needs; this will include toileting, washing and dressing.	Child requires assistance beyond that of their peers with all everyday care needs; this will include toileting, washing and dressing and can be problematic and need skilled intervention.
	Safety and Supervision	Requires occasional supervision beyond that expected for their age. Poor sense of danger or risk of excitability.	Needs supervision to perform daily activities significantly greater than that expected for developmental age. Limited perception of danger to self or others.	Needs constant supervision during the day and night. Would place themselves or others at risk without supervision.
	Behaviour and Social Integration	Some mild, transient or frequent behaviour difficulties. Able to use local non-specialist universal services. Able to sustain limited peer relationships and social integration with support. Child requires support to access services.	Behaviour problems severe or frequent enough to require some specialist advice or provision. Significant support required to achieve social integration. Only able to sustain peer relationships with support. Child requires services to prevent or alleviate stress in the family.	Long-term behaviour difficulties make it difficult for the child to function appropriately most of the time, and maybe of risk to the child or carers without special provision. Dependence upon carer for social integration. Limited awareness of impact of behaviour upon others. Services required to prevent high risk of accommodation for the child.

Children and young people should meet at least one of the dimensions in Band A and one from Band B to meet the criteria for that pathway. To discuss your child's pathway, please call the Short Breaks team on 020 8583 3636.

Summer 2025 activities

Key to services

Throughout the following pages, we have used symbols to help abbreviate information about the Pathway, referral route, age and level of supervision for individual services.

The symbols are as follows:

Pathways



The Pathway, will always be 1, 2 or 3 or a combination.

Referral route



Self referral



Referral by professional

The referral route is either via self referral or referral by a professional who knows the child/young person, e.g. social worker, teacher, health professional.

Age

5–18

Age is simply given as a range of numbers.

Supervision



Parent supervision required



No supervision required

These symbols indicate whether supervision is required or if a child can attend a service on their own. Both symbols may appear if you need to speak to the provider about this.

HAF Code – if you have received a code for the HAF programme (Holiday Activities and Food programme) from your child's school, please give this to the providers when booking activities. The more HAF codes we can collect over the summer will mean extra funding for Short Breaks activities later in the year.

Trip to Beale Park – Thursday 7 and 28 August

Families can book one trip.

Discover Beale Park Wildlife Park and Gardens – Beale Park is the place to be with fun, adventure, animals, gardens, play and activities on the banks of the picturesque River Thames – a great day out for all ages near Pangbourne in Berkshire. For more information, visit www.bealepark.org.uk.

The whole family are welcome to join us; Short Breaks will cover the cost of the disabled child/ren in the family. A carer per child registered with Short Breaks in the family will also have free entry. Prices for the rest of the family as follows:

Other adults and children £13.50

This is a reduced group rate compared to standard rates for both adults and children. These tickets can be bought on the day on arrival at Beale Park.

Children 2 years and under will go in free.

Admission includes a free ride on the wheelchair-accessible train, as well as access to the zoo, gardens, indoor soft play, splash pool, go-kart track, bouncy pillow, and multiple playgrounds.

Coaches will leave from in front of Isleworth Leisure Centre, 146 Twickenham Road, Isleworth TW7 7DJ at 9.15 am and will leave Beale Park at 4pm.

Further details of the day will be sent to you a week before the trip.

To book, please call the Short Breaks team on 020 8583 3636 or email shortbreaks@hounslow.gov.uk.

Please remember the child or young person remains the responsibility of the parent/carer at all times.



Trip To Littlehampton – Tuesday 29 July and Thursday 21 August



Families can book one trip.

We're going to the seaside! A long sandy beach awaits you with the usual charms of a British seaside town – cafes, restaurants, a small fun fair awaits you!

Come and join us for a day at Littlehampton. The whole family are welcome to join us. Coaches will arrive at 9am in front of Isleworth Leisure Centre, 146 Twickenham Road, Isleworth TW7 7DJ and leave at 9.15 am. Coaches will leave from Littlehampton at 4pm. All coaches will have toilet facilities.

We will also have the School Transport

minibuses available for wheelchair users and their families.

Please remember the child or young person remains the responsibility of the parent/carer at all times.

Further details of the day will be sent to you a week before the trip.

To book, please call the Short Breaks team on 020 8583 3636 or email shortbreaks@hounslow.gov.uk.



Summer 2025 activities



WATERMANS

Come on over to the Summer Garden Party!

Saturday 9 August, 1 – 4pm

In the Garden at Redlees Play Centre, Worton Rd, Isleworth TW7 6DW

Come on over to Redlees and join the Short Breaks Summer Garden Party!

Play games, have fun and explore the garden.

Meet the bee-keeper with his charmingly whacky, honey-perfumed bee hives. Look inside if you dare and discover unique and unexpected miniature worlds, each with a little twist!

Watch the giant, playful butterflies spread their wings and, whilst they flutter from flower to flower, whisper sweet messages to you. Cheeky, colourful and captivating, they will share their green wishes with everyone.

And when you need a lie down, welcome aboard the Life Boat. Rock gently, turn slowly in the canvas hammocks and look at the world from a slowly changing point of view. This is about slowness, kindness and gentleness. The Life Boat - it's the slowest ride on earth...

And when you're ready, there may be some cake.

Please book here:

<https://watermans.ticketsolve.com/shows/873656178/events>

In order to book a place at any of the Watermans activities, you will need a promo code as well as your child's UIN, which will be emailed to you by the Short Breaks team before the bookings open.



Outdoor Children's Theatre Festival

Brand new outdoor shows for all the family!

Three days of amazing outdoor theatre and circus, all on the beautiful front lawn at Boston Manor House.

Bring a picnic blanket and sit on the grass – and enjoy great stories, juggling, tightrope walking, clowning and more. Chairs will be available for those who need them.

Boston Manor House is situated in a lovely Park, with a lake, ducks, a café – so plenty to enjoy before and after the show.

All outdoor shows take place on the Front Lawn at Boston Manor House, Boston Manor Road, Brentford, TW8 9JX.

Simon Moreau – L'Escale (The Stopover)

Tuesday 12 August; performances at 11.30am, 1pm & 3pm

(All performances are exactly the same – just choose which time suits you best)

The show lasts 30 minutes.

Recommended for age 3+

L'Escale is a circus tale: the wordless story of an encounter with someone on an imaginary island. This gentle and poetic story speaks of travelling, sharing and leaving. With juggling, rope walking and gentle interaction with



the audience, this is an adventure between dream and reality. A sweet moment that will touch young and old!

A gentle outdoor performance that has been touring European theatre festivals since 2018!

Please book here:

<https://watermans.ticketsolve.com/shows/873656182/events>



Summer 2025 activities



LAStheatre – Caspian’s Storm

Wednesday 13 August; performances at 1pm & 3pm

(Both performances are exactly the same – just choose which time suits you best)

The show lasts 30 minutes. Recommended for age 3+



In the rockpools of a town called Crabbiton lives a little crab. Caspian is small in stature but BIG in curiosity. Happy in his rockpool home, he loves cleaning, collecting adventure stories, and watching the humans who live near the shore. But one stormy night, a strange magic connects sea and land thrusting Caspian into the spotlight and off on an adventure of his own.

Packed with puppetry, music, and plenty of laughs, Caspian’s Storm is a fast-paced, interactive show for the young and young at heart. With LAStheatre’s trademark quirky humour, toe-tapping music, and an important message about protecting our environment, it’s the perfect show for all the family. Get ready to laugh, cheer, and dive into the magical world of Crabbiton!

Please book here:

<https://watermans.ticketsolve.com/shows/873656185/events>



Luigi Ciotta – Everything in a Suitcase

Thursday 14 August; performances at 1pm & 3pm

(Both performances are exactly the same – just choose which time suits you best)



The show lasts 35 minutes.

Recommended for age 5+

Suitcases inside suitcases inside suitcases...

Luigi Ciotta takes us back in time to an imaginary hotel, bustling with guests and too many old suitcases. It’s the 1930s, and music accompanies our delightful porter in his fight against the overwhelming forces of chaos and suitcases.

Luigi Ciotta’s simple charm engages everyone, inviting them to interact with his character in this hilarious and heartwarming performance.

Comedy, theatre and circus that will have the whole family smiling!

Please book here:

<https://watermans.ticketsolve.com/shows/873656186/events>



SHORT BREAKS FILM CLUB

Outdoor films in the Redlees Garden

The Short Breaks Summer Film Club goes outdoors! Come and see two of the best family films of the year so far in the Redlees garden!

Bring snacks and a picnic blanket and sit on the grass. Chairs will be available for those who need them.

FLOW (U)

Saturday 23 August 2025 at 11am (finishes at 12.25pm)

Recommended age 6+



A wondrous journey, through realms natural and mystical, Flow follows a courageous cat after his home is devastated by a great flood. Teaming up with a capybara, a lemur, a bird, and a dog to navigate a boat in search of dry land, they must rely on trust, courage, and wits to survive the perils of a newly aquatic planet. This is a thrilling animated spectacle about the fragility of the environment and the spirit of friendship and community. Flow is a feast for the senses and a treasure for the heart.

Flow is this year’s Oscar winner for Best Animated Feature!

Please book here:

<https://watermans.ticketsolve.com/shows/873656188/events>



SONIC THE HEDGEHOG 3 (PG)

Saturday 23 August 2025 at 2pm (finishes at 3.50pm)

Recommended age 9+



Sonic the Hedgehog returns in his most thrilling adventure yet. Sonic, Knuckles, and Tails reunite against a powerful new adversary, Shadow, a mysterious villain with powers unlike anything they have faced before. With their abilities outmatched in every way, Team Sonic must seek out an unlikely alliance in the hope of stopping Shadow and protecting the planet.

Sonic the Hedgehog 3 is considered the best Sonic film so far with an engaging story, thrilling action, humour and emotional depth.

This is a fun, action-packed film!

Please book here:

<https://watermans.ticketsolve.com/shows/873656189/events>



Summer 2025 activities

At-Home Movie Experience

FROZEN LIGHT THEATRE – THE BAR AT THE EDGE OF TIME



We have just 43 boxes left - a wonderful opportunity to enjoy a fantastic theatre experience from home. You can watch it on your phone, on a laptop, desktop or Note Pad - whatever you have you can access the film for free.

All we need is your address so we can post the box to you.

All you have to do is be one of the first 43 to email info@watermans.org.uk with your address and we will post the Movie Box to you.

A multi-sensory film to experience at home for Pathway 2s & 3s, aged 12+

The glasses are polished, the lights are down low, and time will be hopping.

The Bar at the Edge of Time waits only for you, so what are you waiting for?

Leave the hours, minutes, and seconds behind, step across the threshold and meet the bar's maestro mixologists, crooners and hosts. But a mystery lies at the heart of this



place, a mystery hidden even from them. One that can only be solved when we spend our time together. This is an at-home immersive box and a full-length film, carefully crafted to guide you through this extraordinary journey.

But it's not just a film - it's an experience you can watch over and over again. With scents, textures, and tastes included in the box, every element of *The Bar at the Edge of Time* is designed to engage and stimulate, creating an intimate connection to the story.

The film takes you on a sensory adventure, where the sights, smells and sounds of the show invite you to explore the story in new ways. Time stands still, memories are made, and the cocktails come to you.

Order your box and immerse yourself in the unforgettable world of *The Bar at the Edge of Time*.

The Bar at the Edge of Time is designed specifically for audiences with profound and multiple learning disabilities. It is recommended for young people agreed 12+.

What's inside the box?

- **Sensory Items:** Carefully selected scents, textures, and tastes that bring the performance to life. Each box includes a mocktail.
- **Instructions:** Easy-to-follow guidance to ensure you get the most out of every sensory element.
- **Film Access:** A link to watch the full-length film, guiding you through each moment of the show



ACCESS & FACILITIES

Redlees Play Centre: 9 August & 23 August

The Summer Garden Party and the Outdoor Films both take place at Redlees Play Centre.

The address is:
Worton Rd, Isleworth, TW7 6DW

For the entrance to the Play Centre, turn into the entrance off Worton Road, then turn left into the car parking area. You can park in this area.

There is a locked/controlled gate at the end of this part of the car park – this is the pedestrian entrance into the Play Centre and into the Garden.

Buses 618 and H20 stop on Worton Road, by the entrance to Redlees (stop: Clock Tower Industrial Estate).

Other buses, 267, 481 and H22, stop on Twickenham Road, at the junction with Worton Road (stop: Worton Road). This is 5-10 minutes walk to the entrance gate to Redlees Play Centre.

Redlees Play Centre is fully wheelchair accessible.

There are accessible toilet facilities inside the Play Centre.

HOW TO BOOK

Please book separately for each activity.

Please remember to book 1 ticket for each person attending the films.

Please don't book extra tickets that you may not need, as this means that other people will not be able to attend.

If you need further information about the activities, or support with the online booking process on our website, please email us at info@watermans.org.uk and one of the Watermans team will respond as soon as possible.

At Boston Manor House: 12-14 August

The Outdoor Children's Theatre Festival will be on the lawn at the front entrance of Boston Manor House. The entrance for pedestrians is from Boston Manor Road, marked for Boston Manor House (not the Park).

The address is:
Boston Manor Road, Brentford, TW8 9JX

More details re visiting Boston Manor House can be found here:

<https://bostonmanorhouse.org/visit-us/>

The lawn is fully wheelchair accessible.

During your visit to the festival, you are welcome to use the facilities of Boston Manor House.

The House is open from 12pm until 5pm each day. The House is accessible to all levels via lifts.

There are toilets, including an accessible toilet.

Boston Manor House has a new café which will open in early July and be available for drinks and snacks during the festival event days.

Car parking is available in Boston Manor Park's own car park. This is paid parking, for up to 4 hours.

It is about 5 minutes walk from the House and the Front Lawn. If necessary, you can drop someone off at the Boston Manor House entrance (on Boston Manor Road) before going to park your car.

Buses 195 and E8 stop right outside Boston Manor House (stop: The Ride)

Boston Manor Park is a lovely park. It is open all day and available to enjoy before or after your visit to the Short Breaks theatre shows.

Summer 2025 activities

Young Journalists Media Club



Join us this summer at the Brentford FCCST Community Stadium Hub, we will be running a number of sessions across the month of

August on journalism and Media. This fun and exciting club will work on skills such as, writing, interviews, video content and camera skills, poster/flyer making and more.

Participants will also be given the opportunity to take part in sports and cooking throughout the week. The young people will then help create young people's newsletter, which will then be professionally printed and distributed to all Short Breaks families within Hounslow.

Dates for the summer camp are, **6th/7th/13th/14th/20th/21st/27th/28th August** 1-4pm at the community stadium hub in Brentford.

Brentford FC Community Sports Trust,
1A Thomas Layton Way, Underwood House,
Brentford, TW8 0SB

For bookings and further information please email:

Hannah hcolley-elms@brentfordfcst.com or

Zhane zferguson@brentfordfcst.com.



Brentford Sports

Multi Sports sessions

(Badminton, Table Tennis, Boccia, Dodgeball, Basketball & Football)

Friday 25 July (10am to 2pm)

Friday 1 August (10am to 2pm)

Friday 22 August (10am to 2pm)

Friday 29 August (10am to 2pm)

Springwest Academy

(indoor sports hall)
Browells Lane, Feltham TW13 7EF

For more information or to book a space, please contact Chris Tribe on shortbreaks@brentfordfcst.com



Athletics sessions

– NO NEED TO BOOK!

These are drop-in sessions - you will need to bring your child's UIN with you and book in with us when you get to the athletics track.

Athletics sessions (including running, throwing, and jumping activities)

Osterley Sports Centre (outdoor athletics track), 120 Wood Lane, Isleworth, TW7 5FG

Monday 28 July (10am–12pm or 1–3pm)

Monday 4 August (10am–12pm or 1–3pm)

Monday 11 August (10am–12pm or 1–3pm)

Monday 18 August (10am–12pm or 1–3pm)

For more information, please contact Chris Tribe on shortbreaks@brentfordfcst.com



Outdoor Kayaking (Katacanoe boats)



Brentford Lock/Canal

(meeting place - 8 Bradshaw Yard, Brentford, TW8 8GH)

Wednesday 30 July (4 – 6pm)

Thursday 31 July (4 - 6pm)

Wednesday 6 August (4 – 6pm)

Thursday 7 August (4 - 6pm)

Wednesday 13 August (4 – 6pm)

Thursday 14 August (4 - 6pm)

Wednesday 20 August (4 – 6pm)

Thursday 21 August (4 - 6pm)

Wednesday 27 August (4 – 6pm)

Thursday 28 August (4 – 6pm)

Please note:

- Families will initially be allocated spaces at one session each (if spaces are still available nearer the time, we can offer spaces at extra sessions)
- Families can book **one or two spaces** per session. If you wish to book two spaces, this must include the Short Breaks participant, plus a family member aged 7 or over.
- At the time of booking, please indicate whether you would like to book **one or two spaces**.

For more information or to book a space, please contact Chris Tribe on shortbreaks@brentfordfcst.com



Community Sports Trust

Programmes specifically for deaf and hard of hearing children

Brentford FCCST will be running a number of exciting new programmes for deaf children and their families during the summer holidays, including Day Trips and Sports Activities.

Activities and trips will be confirmed nearer the time.

For further details, please contact Ben Lampert on blampert@brentfordfcst.com or 07842 479295 (Text only).



Cycling for Fun

Lampton Park (meeting point – 'Lampton Park Cycling Hub' storage containers, located just inside Lampton Park, by the Bulstrode Avenue entrance, TW3 3AA)

Brentford FC CST, in partnership with the London Bike Hub, will be delivering cycling sessions designed to help Short Breaks children increase their confidence and develop their skills on their bikes. Details as follows:

Tuesday 5 August

12 – 12.45pm, 12.45 – 1.30pm
Beginners (requiring 1-1 support)

2 – 3.30pm

Intermediate (able to cycle unassisted)

Tuesday 12 August

12 – 12.45pm, 12.45 – 1.30pm
Beginners (requiring 1-1 support)

2 – 3.30pm

Intermediate (able to cycle unassisted)

Summer 2025 activities

Tuesday 26 August

12 – 12.45pm, 12.45 – 1.30pm
Beginners (requiring 1-1 support)

2 – 3.30pm
Intermediate (able to cycle unassisted)

Please note:

- Participants must bring their own bikes with them; there are no bikes available at the venue.
- Parents of beginners, please remove the pedals from your child's bike before you arrive at the session.

For more information or to book a space, please contact Chris Tribe on shortbreaks@brentfordfcst.com



Gymnastics sessions (basic gymnastics activities, delivered by our qualified gymnastics coaches)
Gunnersbury Park Sports Hub (indoor sports hall), Popes Lane, W3 8LQ

Tuesday 29 July

(1 – 1.45pm) Ages: 5-7yrs
(2 – 2.45pm) Ages: 8-10yrs
(3 – 3.45pm) Ages: 8-10yrs

Tuesday 12 August

(1 – 1.45pm) Ages: 5-7yrs
(2 – 2.45pm) Ages: 8-10yrs
(3 – 3.45pm) Ages: 8-10yrs

Please note:

- There is strict guidance from British Gymnastics relating to people with Down's Syndrome taking part in gymnastics activities. The guidance states that people with Down's Syndrome must have had an Atlanto-Axial Instability (A-AI) screening before they can take part in any gymnastics activities.
- Proof of an A-AI screening must be provided at the time of booking (for example, a letter from the participant's GP).
- Participants with Down's Syndrome who have not provided proof of an A-AI screening will not be permitted to take part.

For more information or to book a space, please contact Chris Tribe on shortbreaks@brentfordfcst.com



Summer Sports Party

Lampton School Sports Centre and Grounds, Lampton Avenue, Hounslow TW3 4EP

Date: **Tuesday 19th August**

Time: 12noon – 3pm

A fantastic Summer Sports Party for all Short Breaks families to celebrate all that is good about Paralympic Sport, and fun physical activity. The day is for the whole family and will include a range of sports activities including Athletics, Boccia, Polybat, Football, Indoor Curling, Dodgeball, Tennis, Table Tennis and Badminton... to name a few!

We are also hoping to have the Brentford mascot helping on the day!

Medals and scorecards will be handed out to everyone who takes part!

For more information or to book a space, please contact Chris Tribe on shortbreaks@brentfordfcst.com



Feltham Bees Football/Craft Camp

Springwest Academy
Browells Lane, Feltham TW13 7EF



Feltham Bees will be running a Soccer/Arts + Crafts Camp in the half-term holiday:

Tuesday 29 – Thursday 31 July (10am–3pm)

Tuesday 5 – Thursday 7 August (10am–3pm)

All budding Harry Kane's are welcome - football coaching will be undertaken by FA qualified staff. Alongside the soccer camp, Feltham Bees are also running an Arts & Crafts session.

Young people should bring a packed lunch and a drink/s.

Please note this session is for the young person registered with Short Breaks. Siblings are not able to attend.

For more information or to book a space, please contact Lynn Keppel on 07956 671354 or Dean Heffer on 07825 212715.



Summer 2025 activities

Horse Riding – Park Lane Stables

Families can book one session

Come and meet the horses at Park Lane Stables for a session that will give the young people a chance to meet the horses, learn about grooming the animals and a chance to have a ride. There are 3 young people in each session. Please note that there is a weight limit of 12 stones.

Sessions during the holidays are:

Monday 4 August

11am-12pm and 12pm-1pm

Tuesday 5 August

10am-11am, 11am-12pm, 2pm-3pm and 3pm-4pm

Wednesday 6 August

11am-12pm and 12pm-1pm

Thursday 7 August

11.30am-12.30pm, 12.30pm-1.30pm, 3.30pm-4.30pm and 4.30pm-5.30pm

Friday 8 August

11am-12pm, 12pm-1pm, 3pm-4pm and 4pm-5pm.

Saturday 9 August

10am-11am, 11am-12pm, 2pm-3pm and 3pm-4pm

Monday 11 August

10am-11am, 11am-12pm, 2pm-3pm and 3pm-4pm

Tuesday 12 August

11am-12pm, 12pm-1pm, 3pm-4pm and 4pm-5pm

Wednesday 13 August

11am-12pm and 12pm-1pm

Thursday 14 August

11.30am-12.30pm and 12.30pm-1.30pm

Friday 15 August

10am-11am, 11am-12pm, 1pm-2pm and 2pm-3pm

Saturday 16 August

10am-11am, 11am-12pm, 1pm-2pm and 2pm-3pm

Sunday 17 August

1pm-2pm, 2pm-3pm, 3pm-4pm and 4pm-5pm

Please note the new address for the horse riding sessions:

Park Lane Stables

Park Lane, Teddington TW11 0HY

Please note closed shoes/boots should be worn – sandals are not safe footwear for horse riding or being in the stables. This includes parent/carers as well as the young people.

To book a place, please call Short Breaks on 020 8583 3636 or email shortbreaks@hounslow.gov.uk.



Lampton Leisure – Swimming Lessons

Hanworth Airparks

Uxbridge Road, Hanworth TW13 5EG

Tuesday 29 July, 5, 12, 19 and 26 August

Friday 1, 8, 15, 22 and 29 August

Available time slots: 1.15pm-2pm and 2.15pm-3pm

Heston Pools & Fitness

New Heston Road, Hounslow TW5 0LW

Wednesday 30 July, 6, 13, 20 and 27 August

Thursday 31 July, 7, 14, 21 and 28 August

Available time slots: 1.15pm-2pm and 2.15pm-3pm

Isleworth Leisure Centre

Twickenham Road, Isleworth, TW7 7DJ

Wednesday 30 July, 6, 13, 20 and 27 August

Available time slots: 1.15pm -2pm and 2.15pm-3.00pm

Please note there is a very high demand for the lessons - the team will aim to offer more than one lesson (if that is indicated), but please understand this may not be possible.

Please note all swimming lesson timings include a 30 minute lesson for each child, followed by 15 minutes of fun free time supervised by the instructors.

To register your interest in the swimming lessons, please email the pool that you would like to attend on the following email addresses:

Hanworth: Diana Bala

Diana.Bala@lamptongroup.co.uk

Heston: Emyr Ben Youssef

EmyrBen.Youssef@lamptongroup.co.uk

Isleworth: Anne Polinario

Anne.Polinario@lamptongroup.co.uk

- **Pathway 3** families should register their interest by **Friday 4 July**
- **Pathway 2** families should register their interest by **Tuesday 8 July** and
- **Pathway 1** families by **Friday 11 July**.

You will be put on a wait list and after the closing date for your pathway, you will then be directly contacted by Lampton Leisure to book the lessons in.



Summer 2025 activities

Redlees and Reflections Play Centres

Sunday Sessions Drop-In – 10am – 2pm

Families **do not** need to book the sessions at Redlees and Reflections on a Sunday - these are drop-in sessions. **Please bring your child's UIN with you.**

See below dates for the Sunday sessions at the Redlees and Reflections play centres up to the end of October 2025:

June 2025	
29 June	Redlees

July 2025	
6 July	Reflections
13 July	Redlees
20 July	Reflections
27 July	Redlees

August 2025	
3 August	Reflections
10 August	Redlees
17 August	Reflections
24 August	CLOSED
31 August	Reflections

September 2025	
7 September	Redlees
14 September	Reflections
21 September	Redlees
28 September	Reflections

October 2025	
5 October	Redlees
12 October	Reflections
19 October	Redlees
26 October	Reflections

For those that are new to Short Breaks, Redlees and Reflections are two play centres in the borough that have been adapted for children with disabilities with adapted play equipment, sensory rooms etc.

Both venues are safe and secure. Family groups are welcome.

Please note that Play team staff have the right to refuse entry should numbers within the centres reach their capacity.



Redlees Play Centre

Located in Worton Road, Isleworth, TW7 7DW (the play centre is in the corner of the Redlees Park car park (accessed via Worton Road) which is next to the outdoor courts.



Look for a purple sign with 'Redlees Play Centre' – there is secure access so you will need to buzz the staff to let you in.

Reflections Play Centre

c/o Hounslow Urban Farm, Faggs Road, Feltham TW14 0LZ – the centre is next door to the entrance of the Urban Farm.



If you have any queries, please call 020 8583 3636 or email shortbreaks@hounslow.gov.uk



Exciting Opportunities for Young People at Our Barn Community!

Are you a parent or carer of a young person (16-35) with additional needs, autism or learning disabilities? Looking for a safe, inclusive space where they can make friends, develop skills, and have fun?



Join Our Barn Community in Hounslow!

- A welcoming, supportive environment
- Fun activities – games, social events, creative projects & more!
- Skill-building to boost confidence & independence
- A chance to connect with others in the community

Where? Our Barn Community

When? Weekly sessions – get in touch for details!

Find out more: www.ourbarn.org.uk or www.communitycomet.co.uk to hear our youth voice.

Give your young person a place to thrive!

Contact us today to find out more!

David Roughan - Youth Leader

Our Barn Youth Club

Redlees Play Centre every Sunday, 3pm-6pm for 16-25 year olds, funded by Short Breaks.

What 3 Words: monkey.excuse.badge

07484 326108

www.ourbarn.org.uk

www.communitycomet.co.uk

Summer 2025 activities

Brentford Fountain Leisure Centre – NO NEED TO BOOK!

You will need to bring your child's UIN with you and book in with us when you get to the leisure centre before you go into the pool.

Depending on how many families come along, we may have to manage how many are in the pool at any one time so please bear with us and the Lampton Leisure team on the day.

Family Swim – Drop-In Session

Exclusive Short Breaks swimming sessions at Brentford Fountain Leisure Centre has been arranged for:

Wednesday 23 and 30 July, 6, 13, 20 and 27 August

Time: 9–11.30am

Please note that all children must be supervised in the pool – Brentford's Pool Admissions Policy is a ratio of one adult to two children under the age of 8. If you are bringing more than two children under the age of 8, there must be two adults in the pool with them.

Brentford Fountain Leisure Centre
658 Chiswick High Road, Brentford
TW8 0HJ

To find out more information please ring the Short Breaks team on 020 8583 3636 or e-mail: shortbreaks@hounslow.gov.uk.

Pool Party – Drop In Session

Come and join us for a dip and a dance! A pool party has been organised for:

Friday 25 July and Friday 29 August

Time: 5-7pm

Please note that all children must be supervised in the pool – Brentford's Pool Admissions Policy is a ratio of one adult to two children under the age of 8. If you are bringing more than two children under the age of 8, there must be two adults in the pool with them.

Brentford Fountain Leisure Centre
658 Chiswick High Road, Brentford
TW8 0HJ

To find out more information please ring the Short Breaks team on 020 8583 3636 or e-mail: shortbreaks@hounslow.gov.uk



Decisions R Us

Bid for up to £250 for a short break or activity!!

Please note that applications to Decisions R Us can be made every other financial year. So, for example if you apply in this financial year, ie. from 1 April 2025 to 31 March 2026, you will have to wait until after 1 April 2027 to apply again. If you have any queries, please call on the Short Breaks team on 020 8583 3636.

Last year young people in Hounslow were given the opportunity to apply for funding for their own 'personalised' short break activity. These included horse riding, swimming lessons, gymnastic classes, even rock climbing...

Once again, funds have been allocated to young people on pathway 1 and 2, aged 5 up to 18, living in Hounslow who are looking for help with a short break or activity. This can include equipment that will help them access a short break! Young people and parent/carers on their behalf can bid for up to £250 to fund their own short breaks.

The activity needs to be positive and enjoyable, that gets the young person out and about in the community, hopefully developing a hobby or a skill. We are very flexible in what can be applied for as each child has their own interests but there are some no-nos:

- No electronic equipment including laptops, mobiles, gaming consoles
- No furniture or household items
- The only holiday that could be funded would be one for the young person themselves such as a PGL holiday or a residential with a youth club.
- No Merlin annual passes

The application form is available from the Short Breaks team or from the downloadable documents on the Short Breaks web page www.hounslow.gov.uk/shortbreaks which ideally the young person will then need to complete (where possible) or with help from an adult. Young people can attach a picture, film, photo or other media to the application form if required to express or support their idea.

Applications will be then presented to the Decisions R Us Panel who will make a decision about each application.

Decisions R Us Panel Dates

10 September 2025 – deadline for applications Friday 5 September

14 January 2026 – deadline for applications Friday 9 January

If you have any queries, please call the Short Breaks team on 020 8583 3636.



Services Throughout The Year

Music Therapy – Richmond Music Trust



Richmond Music Trust are offering a slightly adjusted programme to children and families offering both direct contact music therapy sessions and online sessions.

Our online music therapy programme during the summer has been very popular and we have received some lovely feedback from families, which showed clearly that music therapy via video link can really work well for some children. Therapists and parents have been amazed about how effective children can engage in online music therapy accessing one to one and group sessions. As we are still unable to use our usual premises at the Hub, we have decided to offer a mixed programme offering both **online sessions** as well as **direct contact** sessions.

Online Music Therapy Programme on Saturdays

Sessions will be a little different but our therapist Sara Cole will create a fun and child-centred experience including shared musical activities, singing and games. These sessions will be uniquely tailored to your child's needs, choices and ability. We have vacancies for weekly one to one sessions and vacancies in weekly small group session.

Sessions will need to be attended jointly with a parent, carer or sibling so that your child is supported to maintain engagement. If you have musical instruments at home these can be used and the therapists will also provide you with ideas of how to use household items for sound production.

This programme is open to children from Pathway 2 & 3. We accept referrals from those that would like to try out this mode of engagement or continue on from the summer programme.

How does it work?

All you need is a computer (PC or MAC), tablet or Ipad and a reasonably stable internet connection. You will need to install the free Zoom application and we will send you all the info of how to do this. **If you need any help, Joanna Dawson from Hounslow Short Breaks or Andreas Rosenboom from Richmond Music Trust are available to help if required.**



Direct Contact Music Therapy Sessions on Saturdays at Richmond Music Trust, Twickenham, TW2 6RB

The Trust also offers sessions from their premises in Twickenham, TW2 6RB and therapist Muhamad Badry will be offering sessions on Saturdays between 10 and 4pm. We will adhere to social distancing and have a variety of measures in place to assure Covid Safety.

How do I enrol?

Please contact us if you wish your child to access the music therapy programme, by emailing: musictherapy@richmondmusictrust.org.uk

Please let us know if you wish to access the online or the direct contact option.



Services Throughout The Year

Heathrow Gymnastics Club – Play Gym

This service is only available to children registered with Short Breaks up to the age of 7 and up to 130cm in height on pathways 2 and 3.



You can use this service throughout the year, not just in the holidays!

Please note that on arrival parents are required to fill in a registration sheet which will be asked for basic information about their disabled child, including their disability and UIN number. Short Breaks will only pay for the disabled child – any siblings or friends will need to be paid for by the parent/carer.

The play gym sessions are open to children

on pathway 2 and 3 up to 7 years old or 130cm (4 feet, 2 inches). Brothers and sisters are welcome to attend but will need to be paid for by the family. Session times below.

There is no need to book the sessions but arrive promptly to make sure you can access the session.

Heathrow Gymnastics Club, Green Lane, Hounslow, Middlesex, TW4 6DH

To find out more information, please ring the Short Breaks team: **020 8583 3636** or email shortbreaks@hounslow.gov.uk

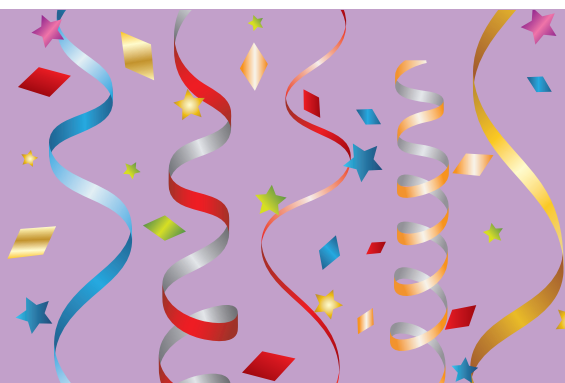


Monday - Friday	Saturday	Sunday
10am – 11am	9.30am – 10.30am	Closed
11am – 12pm	10.30am – 11.30pm	
12pm – 1pm		
1pm – 2pm		
2pm – 3pm		
3pm – 4pm		

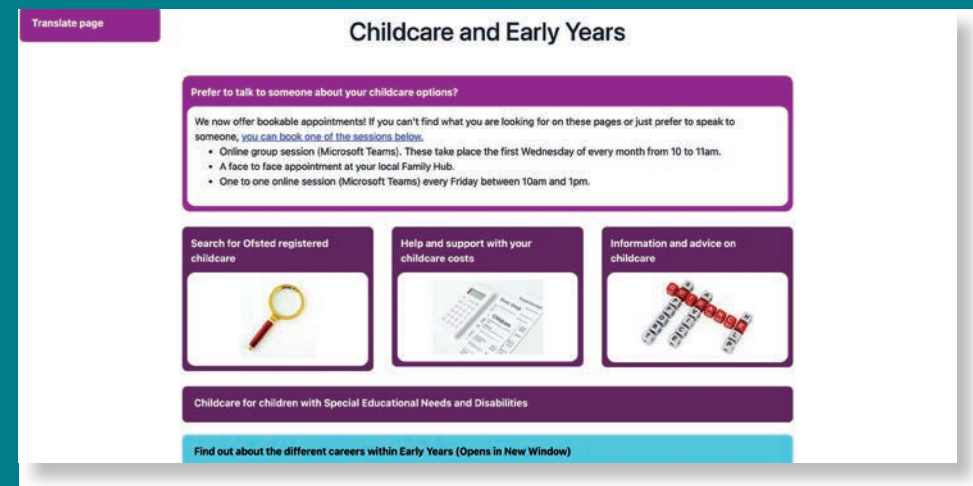
Congratulations...

If you have any good news stories, let Short Breaks know and we will publish it in future newsletters.

Please call us on **020 8583 3636**.



Childminding – 24 Hours Free Childminding Service



The Short Breaks Service will pay for an introductory 24 hours childminding free. This is an opportunity for you and the childminder to start building a long-term supportive relationship for your child.

A registered childminder is a person who looks after children in the childminder's own home.

Registered childminders are found on the Hounslow Family Services Directory at www.hounslow.gov.uk/childcare. Select the search for childminders button and choose your area. You will see a list of childminders and will need to click on each name to see their full profile.

Some childminders may have listed specific experience they have in caring for children with a particular special need/disability. From this information, it's advisable you then contact the childminder to see if they can accommodate your child's individual

needs along with the hours and days you are looking for.

Once you have found someone who meets your needs, call the Short Breaks team who will organise payment of the first 24 hours directly with the childminder. It will then be down to you to continue any ongoing payments with the childminder for further care.

- Your family/child must be registered with Short Breaks to use this service
- Your child must meet level of need pathway 2 or 3
- Once the 24 hours introductory offer is over, it is your responsibility to continue paying for the service.

For more information or to discuss organising your childminding, please call the Short Breaks team on **020 8583 3636**.





**Should you require this Newsletter
in a format other than English please
contact the Short Breaks team on
020 8583 3636 or email:
shortbreaks@hounslow.gov.uk**

**Children with Disabilities Social
Work Team, Safeguarding and
Specialist Services**

London Borough of Hounslow
Hounslow House, 7 Bath Road,
Hounslow TW3 3EB
Telephone: 020 8583 3636

www.hounslow.gov.uk