

GREEN FLAG MANAGEMENT PLAN 2023-28

Pevensey Road

Local Nature Reserve

2023-28



London Borough
of Hounslow

Lampton
Services
Greenspace

Updated 2025



Foreword

The London Borough of Hounslow has some superb greenspaces that everyone can be proud of. They are places where people can relax, enjoy nature, play, or take part in cultural and historic activities and recreation. They are essential for the health and well-being of our residents, and they are vibrant spaces that provide a borough-wide green infrastructure for our communities.

In Hounslow, we are committed to stimulating a strong and robust green recovery related to our Greener Borough Framework and Climate Emergency. The Council's Green and Blue Infrastructure Strategy plays a major role in delivering the Greener Borough Framework and sets out key priorities for our greenspaces in areas such as health and wellbeing, regeneration, climate change and nature recovery.

The London Borough of Hounslow considers the Green Flag Award process as a tool towards positively developing our greenspaces within this strategic framework and in partnership with our communities. It contributes to providing a vision, with clear objectives and priorities for how the Council and its partners would like to see greenspaces managed in future years.

This plan is not only the commitment from the Council to improve our greenspaces but is an important recognition of the support and commitment of the friends of parks, community groups, local clubs, third sector and partners who share our visions and work with us to respond to our green agenda.

Acknowledgements

This plan has been produced by Lampton Services Greenspace* (GS) and the London Borough of Hounslow (LBH) Parks Team. In addition, it is important to acknowledge the great contribution from all Pevensey Road Green Gym Rangers and the Friends group FORCE for their commitment and dedication in supporting the development, promotion, and management of Pevensey Road Local Nature Reserve**.

*Lampton Services Greenspace (GS) is part of the Lampton Limited Group and is a company wholly owned by London Borough of Hounslow with an aim of returning value to the Council representing a bold new ambitious approach.

**Pevensey Road Local Nature Reserve will also be referred to as Pevensey Road LNR.





Contents

<i>Foreword</i>	1
<i>Acknowledgements</i>	1
<i>Purpose of the Plan</i>	3
<i>Where are we now?</i>	5
<i>Site Description and facilities</i>	5
<i>Detailed History</i>	7
<i>Nature Conservation</i>	9
<i>Flora & Fauna</i>	10
<i>Latest developments</i>	11
<i>Where do we want to go?</i>	16
<i>Green Flag analysis</i>	16
<i>SWOT Analysis</i>	17
<i>How do we get there?</i>	18
<i>Vision and Objectives</i>	18
<i>Meeting the Green Flag Award Criteria</i>	19
<i>A Welcoming Place</i>	18
<i>Healthy, Safe & Secure</i>	18
<i>Well Maintained & Clean</i>	20
<i>Environmental Sustainability</i>	24
<i>Biodiversity & Heritage</i>	26
<i>Community Involvement</i>	27
<i>Marketing</i>	28
<i>How do we know we have arrived?</i>	31
<i>Appendix 1- Action Plan</i>	32
<i>Appendix 2- GS Works Programme</i>	34
<i>Appendix 3- Management Structure & Responsibilities</i>	36
<i>Appendix 4- Habitat Work</i>	39





Purpose of the Plan

The Management Plan for Pevensey Road Local Nature Reserve has been prepared by LBH and Lampton Services Greenspace with input from the Pevensey Road Green Gym Rangers group. The plan is specifically developed for the individual site with a dedicated Green Flag Action Plan.

This plan has been developed following detailed assessment of the Green Flag Award criteria and a comprehensive collaborative review of the existing uses, management, and maintenance of Pevensey Road LNR.

As part of the development of the plan, detailed consultation has taken place with the Lampton Services Greenspace Countryside team, parks maintenance and management team, LBH officers and Friends groups.

The Management plan is a 'working document' that brings together all the information relating to Pevensey Road LNR and will be updated, revised, and annually reviewed. This plan has been developed based on the Commission for Architecture and the Built Environment (CABE) Space document *"A Guide to Producing Park and Greenspace Management Plans"* and the *"Green Flag Award Guidance Manual"* guidelines.

Policy & Strategic Context

Actions and aims within this management plan are both guided by, and relate back, to wider Council strategies. The development of parks and open spaces are a vital component of the Council's Corporate Plan 2022 – 2026. Our work during this period is focused on six priority ambitions for a borough that is greener, healthier, cleaner, thriving, safer, and livable. Green infrastructure contributes in many ways to helping us achieve these priorities.

A key approach of Hounslow Council is working under the concept of "One Hounslow" where services are delivered without silos, working for specific outcomes with several internal council departments, community groups, NGOs, and government bodies.

Parks and open spaces play an important role in the approach highlighted in the Council's Joint Health and Wellbeing Strategy with start, live and age well, preventing ill-health, which in turn has an impact on reducing costs within the wider economy, the Council, and the NHS.

The Council's Equalities and Diversity Strategy 2023, created to improve equality, diversity, and inclusion - sets out an ambitious approach to target policies and funding to the areas which need them most to thrive. The strategy is based on three pillars - Equality by Place, Equality by Group, and Equality as Employer. Hounslow Council has committed to transform the opportunities and life-chances of communities in the borough's 30 most disadvantaged neighbourhoods.

The Council approved the Greener Borough Framework 2020-30 which seeks to provide a high-level framework to deliver on the Council's ambition and aspirations for the borough through enhancing our environment and reducing our use of resources. The framework is part of a wider ambitious green agenda bringing different people and organisations together to discover, engage, innovate, and deliver.





The adoption of the Green and Blue Infrastructure Strategy and Nature Recovery Plan are the pillar of the strategic framework for the development of our parks and open spaces and their management plans through the Green Flag Award process.

Useful Links:

- [Corporate Plan 2022-26](#)
- [Climate Emergency](#)
- [Green Infrastructure Strategy](#)
- [Greener Borough Framework](#)
- [Nature Recovery Action Plan](#)
- [Equalities and Diversity Strategy](#)

Parks Funding

The Council's Parks service is funded by an annual salary and contract revenue budget for base line ground maintenance activities, and provided by our service providers, Lampton Services Greenspace, to maintain all of Hounslow's parks and open spaces, including allotments, cemeteries, trees, countryside and other workstreams.

Current capital funding has been allocated through a parks improvement project, and sites which require improvement will be prioritised. This funding will cover 2 years of project delivery and staff resourcing 2023 – 2025. Other capital funding is obtained via Community Infrastructure Levy (CIL); S106, the Councils Thriving Communities fund (local CIL) and other grants and initiatives. These are applied for annually or as necessary and are based on need and strategic investment required by both the Council and local communities.



Where are we now?

Site Description & Facilities

Pevensey Road Local Nature Reserve is an oasis hidden within a heavily urban area. The reserve is highly attractive for visitors who take part in various activities on site such as dog walking, recreation, wildlife spotting and photography and art/ graffiti. The Countryside Rangers and the Green Gym Rangers work with the local community to ensure that the park continues to be a welcoming, safe, and enjoyable park to visit. Pevensey Road LNR is managed for two primary purposes. In terms of its ecology, it is an important link in a chain of riverine habitats that run along either side of the River Crane and form a vital natural corridor through what is an otherwise highly developed part of West London.

Pevensey Road Local Nature Reserve is located to the South of the River Crane, north of Hanworth Road at Grid reference TQ120733. The site forms part of the Site of Metropolitan Importance known as M076 The Crane Corridor.



Site Information

Name: Pevensey Road, Local Nature Reserve

Contacts: Ranger-0788741080

Web: www.hounslow.gov.uk

Designation: Local Nature Reserve, Site of Metropolitan importance

Ownership: London Borough of Hounslow

Byelaws: A copy can be downloaded at www.hounslow.gov.uk

Transport: Train: Feltham Station

Buses: H25, 111

Address: TW13 5HA ///fields.wisdom.help

Email: Countryside@hounslow.gov.uk

Facebook: [Pevensey Road Green Gym Rangers](#)

Size: 18ha

Access: open access at all times

Tube: Hatton Cross

Parking: Street parking

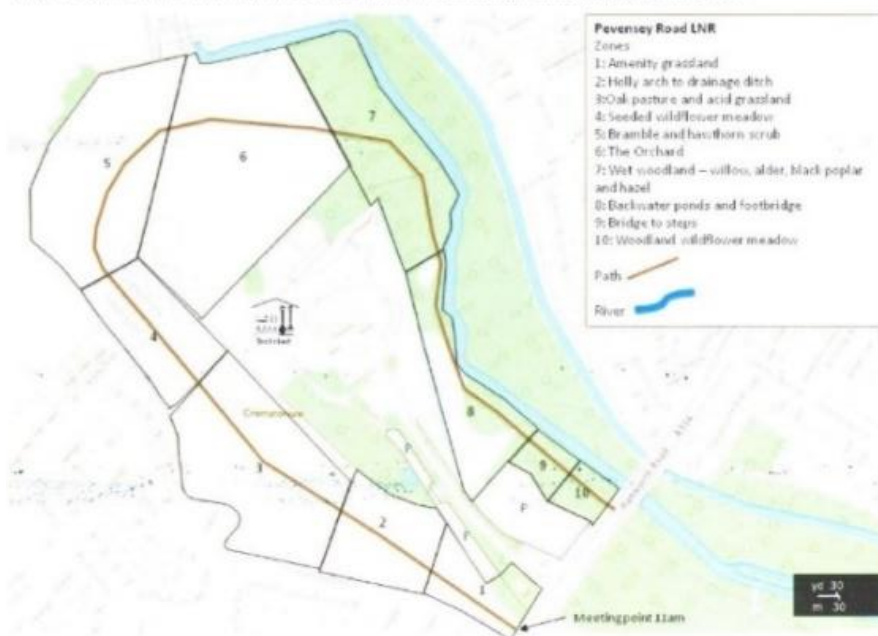
Local Facilities: Amenity grass area, meadows, woodland, community orchard, log seating area, former sewage tanks 'Feltham Circles'



Within the 18-hectare site, there are four main habitats:

- Beside the River Crane lies a zone of wet woodland, which is a mixture of willow, alder, and ash with a tangled understory primarily of bramble and common nettle.
- North of this is an area of hawthorn and elder intermixed with bramble and coarse grasses.
- In the middle of the site lies an area which used to house settling tanks but is now an area of round concrete walls which support a high level of graffiti art from local enthusiasts.
- To the west of the settling tanks, lies a manmade mound which is covered in fairly recent but never less herb rich grassland.
- To the south of this is a small area of reseeded wildflower grassland which is rich in species such as wild carrot and great burnet.
-
- The remainder of the reserve, the western half is occupied by a neutral meadow which is fairly species poor but does house interesting indicator species such as pignut which indicate that the meadow is of some age.

Map of Pevensey Road Nature Reserve divided into zones according to the different habitat types



In terms of its use for recreation, it is again a vital link along the Crane corridor which facilitates access for local people along the river north through Hounslow into Hillingdon and south into Richmond and along to the Thames. As well as this strategic importance the site is also a vital green space for the local estates which surround it, providing a quiet oasis for walking, nature study and other passive recreation. Pevensey Road Local Nature Reserve is managed by the Lampton Services Greenspace Countryside Team on behalf of LBH. There is an active volunteer group, The Pevensey Road Green Gym Rangers, who meet weekly on site to carry out maintenance and habitat improvements.

The reserve is managed in line with the site-specific habitat plan and relies on volunteers to assist in the practical works. The Rangers visit the site several times per week ensuring the park is looking clean and tidy and ensuring it is safe for visitors. FORCE (Friends of the River Crane) is also active on site and carry out visitors counts and surveys as well as looking for funding applications and assisting future visions for the Crane Corridor.



Detailed History

The river Crane begins in Harrow and runs through Hillingdon as the Yeading Brook, changing its name to the River Crane at the Grand Union Canal in Hayes and eventually meeting the Thames at Isleworth. The artificial Duke of Northumberland's River links the Crane Valley to the Colne Valley.


The landscape of the lower Crane valley today reflects its history and past use. This can be seen in some of the place names surrounding the park- for example farms have given their name to the Butts Farm Estate across the Hanworth road.

The landscape, especially across from the Pevensey entrance into the Crane Park shows evidence of previous use; for example, the blast absorption mounds linked to the manufacture of gunpowder mills and the mill channel created to provide a regular water supply to power riverside mills. From the late C18th to 1926 Hounslow Gunpowder Mills operated from the land east of Hanworth Road, covering 150 acres and creating new wide leats and a mill pond- now the site of Crane Park Island.



The history of the Pevensey Road LNR still remains unclear, however we know there was a farm on the site until the early 20th Century, with old maps showing orchards in the surrounding fields. The veteran apple and pear trees found on site today support this idea with potential links to the farmlands at Crane Park.

Opposite the site entrance, just to the East of Hounslow Road, we know The Butts and Glebe Farm of over 200 acres were bought by William Whiteley in 1891. William Whiteley created a single model farm, which also included the Rookeries from 1894, known as the Hanworth Farms. It was apparently never profitable, He grew an extensive range of fruit and vegetables whilst also rearing cows, pigs, bees, dogs, and rabbits. He also manufactured jams, potted meats, squashes, confectionary and dishes for invalids, pickles, and sauces. All preparation and packaging took place on site and all produce was taken to market by cart.



After Whiteley's death in 1907 the sites continued to be farmed, eventually sold to Beach's Jam Company of Brentford. From 1933 some of the farmland was gradually sold off for housing and in the 1940's, a sewage works was built on Pevensey, however this was quickly abandoned leaving the surrounding area as a public space and nature reserve.

Pevensey Road Local Nature Reserve borders on three sides the Southwest Middlesex Crematorium which was opened by President of the Cremation Society Lord Horder on 9th October 1954. This was the 74th local authority crematorium to open in the United Kingdom and the sixth of that year.

The site's gardens have been gradually extended and now consist of the North Garden, Wild Garden, a Rose Garden and Lawn 1, 2 and 3 which include meadow land, stone works, and water features. The gardeners of the crematorium support the nature conservation work carried out in the neighbouring Pevensey Road LNR and provide storage and facilities to staff and volunteers

Community Graffiti – 'Feltham Circles'

The former sewage tanks have created three large concretes 'bowls,' which have been informally used by graffiti artists over the last few decades. The local enthusiasts design seasonal and relevant pictures to decorate the area and today many visitors stop by to admire the artwork which has become iconic for this area.

The Countryside Rangers engage with the artists in the area and together work hard to ensure the bowls are used for positive graffiti pictures. We encourage members to report any abusive or offensive artwork to the team.





Nature Conservation

Topography

The reserve rises gently from the River Crane to its Western edge on Pevensey Road. It has an area at the northeastern end where artificial mounds rise to some 7 to 8 metres in height adjacent to the disused settling tanks. At the southern corner of the sites where the River Crane passes under Hanworth Road there is an artificial mounding which raises the height of the site from the floodplain to the bridge some 6-7 metres above.

Soils and Geology

The natural pedology of Pevensey Road LNR is Taplow Terrace gravels and loess to the River Crane alluvial silts. These are supplemented in the northern end of the reserve by made up ground derived from the old sewage works and railway working in that area.

Woodland

The eastern half of Pevensey Road LNR is comprised of semi-natural deciduous woodland that follows the River Crane corridor and surround the crematorium that lies in the centre of the reserve. The woodland adjacent to the Crane is wet in nature and displays species indicative of this with willow *Salix spp.*; alder *Alnus glutinosa* and ash *Fraxinus excelsior* predominant. There is a fair amount of invasive sycamore *Acer pseudoplatanus* also present here. The canopy is open, and the understory is limited to elder *Sambucus nigra* and hawthorn *Crataegus monogyna*. Ground flora reflects the wet nature of the woodland and reed sweet grass *Glyceria maxima*, reed canary grass *Phalaris arundinacea* and gysywort *Lycopus europaeus* are all to be found amongst the common nettle *Urtica dioica* and Himalayan balsam, *Impatiens glandulifera*.

The woodland found to the east of the crematorium species poor, dominated by elder and hawthorn with very little ground flora. The most important species here is several veteran pedunculate oak trees *Quercus robur*.

Natural Grassland

In the western half of the reserve is a neutral meadow which is dominated by coarse grass species such as perennial rye grass, cocksfoot, and false oatgrass. It has a limited range of herbaceous species but does contain a significant abundance of the old grassland indicator species pignut.

Artificial Mounds and Reseeded Grassland

The artificial mounds at the northeastern end of the site are relatively recent and covered in a wide range of opportunist herbaceous species. The reseeded grasslands area to the west of the mounds is also rich.



Flora & Fauna

Pevensey Road LNR is also home to a variety of plant and animal species.

Birds

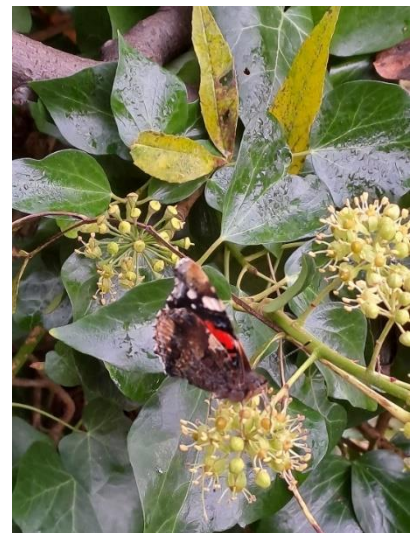
- Bull Finch
- House Sparrow
- Lesser Redpoll
- Lesser Spotted Woodpecker
- Reed Bunting
- Song Thrush
- Starling
- Kingfisher
- Linnet
- Hedge Accentor



Butterflies and Moths

- Grizzled and Essex Skipper
- Meadow Brown
- Orange-tip
- Painted Lady
- Peacock
- Red Admiral
- Small Copper
- Small Heath
- Small Tortoiseshell
- Purple Hairstreak
- Speckled Wood
- Cinnabar Moth

- Brimstone
- Brown Argus
- Comma
- Common Blue
- Essex Skipper
- Gatekeeper
- Green-Veined White
- Holly Blue
- Large Skipper
- Large White
- Clouded
- Yellow
- Camberwell Beauty



Mammals

- Hedgehog
- Soprano Pipistrelle
- Noctule Bat
- Water Vole

Reptiles and Amphibians

- European Eel
- Grass Snake
- Adder
- Common Toad
- Slow Worm

Insects

- Stag Beetle plus, many more





Recent Developments

Future goals in 2025:

- Wildflower meadow reseeded
- Continue the relationship with volunteers and boost footfall to the site

Achievements 2024:

To encourage access to the open space and nature reserve, several improvements and additions have occurred throughout 2024:

- A fruit tree orchard has been installed and supported by Pevensey Road Green Gym Rangers. Surrounding the trees are daffodil bulbs that have been planted around the trees, and lavender lining one side of the pathway
- A wildflower meadow has been created with the help of the Green Gym Rangers and a bug hotel installed.
- A wildflower carving has been installed and created by Wild Wood Carving highlighting the prominent butterfly species known within Pevensey Road Open Space. Additionally, the wood carving has an integrated bug hotel to increase pollinator provision.
- three DDA compliant Cannock picnic tables have been installed.
- the Pevensey Road Green Gym Rangers led by the Lampton Services Greenspace rangers volunteered 2900 hours to improve the park. The group undertook a host of tasks throughout the year including litter picking, meadow scything, orchard pruning, tree planting and river rubbish clearance.
- The group have also undertaken several projects funded through the Community Fund Grants from the Crane Valley Partnership including wildflower meadow improvements, pond improvements and orchard maintenance. These grants allowed a range of tools and materials to be bought to aid these projects.
- Alongside these projects a host of annual events were carried out including apple day which yielded a bumper crop of apples and was attended by 27 volunteers who helped collect and press the apples into juice.
- Several projects were also undertaken to install new wildlife features on site to improve local biodiversity, these included 2 hibernaculum's and a stag beetle log pile.
- This year alongside the annual meadow scything the meadows that are dominated by pignut have been tractor cut by the Lampton Services Rangers and then hand raked by the Pevensey Road Green Gym Rangers to remove the arisings.
- A brand new 450m of 2m wide Breeden gravel path from Pevensey Road Open Space to the Cavalry Tunnel, path to connect with Brazil Mill Wood was completed in Summer 2024. Ambition to increase accessibility, activation, footfall.

This new path supports the Crane Valley vision to have a waterside Greenway.



Volunteers creating a Hibernaculum



Apple Day 2024



Picnic tables



Butterfly Carving x Bug Hotel



Breeden gravel path from Pevensy Road Open Space to the Cavalry Tunnel





Achievement in 2023:

In winter 2023 the Council have been working with Richmond council on River Channel and Riverbank improvements to support the reintroduction of water voles along this stretch of the river Crane.

At the north end of Crane Park, Richmond's Little Park and Hounslow's Pevensey Road Nature Reserve lie opposite each other, north of Hanworth Road. The boundary between the two boroughs is the centre of the river.

In Spring 2020 and Spring 2022, tree works were carried out to decrease shading along approximately one third of the Richmond bank, to increase light levels and help establish natural vegetation along the bank and river margins. The trees which were cleared have been further used to create deflectors that have been strategically placed along the river. These deflectors will allow the river to create form a natural meandering shape instead of the straight shape it has from various historical uses of the river and in turn provide a range of fast, slow, shallow, and deep areas of river for a range of wildlife.



Results of reducing tree shade at Little Park (right bank)



Tree flow deflector installed at Little Park, March 2022

Orchard Management

Started in 2019 with focus on planting additional fruiting trees of apple and pear varieties. At the time, the orchard was a jungle of overgrown vegetation with bramble dominating the area. The Pevensey Road Green Gym Rangers worked hard to clear the trees to identify species and started the annual apple day with the Rangers.





‘Apple day’ is a chance to invite all the local community, local schools, and other voluntary organisations to celebrate how much the site has achieved. We spend the day collection fruit, making juices and sharing recipes.



Apple Day November 2022 at Pevensey with Green Gym Rangers and Friends

Bridge Installation in 2019

Linking Pevensey Road LNR to Little Park in Richmond. Adding ramps and completing the railings in 2020 for accessibility and safety. Most recently FORCE was involved in a project between the Greenspace Countryside Rangers, London borough of Hounslow and the London Borough of Richmond to improve links between the neighbouring boroughs with the installation of a foot bridge linking Pevensey Road Local Nature Reserve and Richmond’s Little Park. The funding bid, supported by FORCE ensured the smooth delivery of a footpath across the river allowing visitors to explore both parks with ease.





The next project was establishing a wildflower meadow around the owl bench, near the settling tanks. This area was densely covered in bramble and scrub; thus, the major task was removing this growth as well as the dense root system below. This was a difficult task but with the variety of abilities within the group, we successfully managed the land ready for seeding. In 2018 the first wildflowers were seen in amazing show of vibrant colours, and the group have been successful at continuing the meadow since.

The area has since been expanded with an additional meadow now called the 'Coronation Meadow' having been created behind the settling tanks area as part of the celebrations for the King's Coronation.





Where do we want to go?

Green Flag Analysis

The ambition for LBH in partnership with GS and community groups is to continue to work to improve standards and develop parks and opens spaces strategically according to corporate priorities and local needs.

A clear connection between the criteria identified by the Green Flag Award Scheme and the main points gained from the SWOT analysis and site review completed with the Friends group has helped to establish a comprehensive management plan for this site.

The management plan process is described below the section “How do we get there?”

Consultation & Co-design

The LBH has a strong partnership with the Friends groups-designing the future of the park together in most initiatives and opportunities.

Continuous dialogue is in place through regular communication and a quarterly forum where friends discuss wider issues and learn from each other to improve overall management standards.

LBH works in close partnership with GS with monthly project and development team meetings where the monitoring and progress of these plans are discussed.

LBH engage annually with Friends groups and community groups in compiling these management plan and their progress Ward Councillors and the Lead Member for Leisure Services are regularly updated on Parks development projects and strategies.

Liaison with the Hounslow Met Police and the Councils Enforcement Team on matters around ASB and public safety.

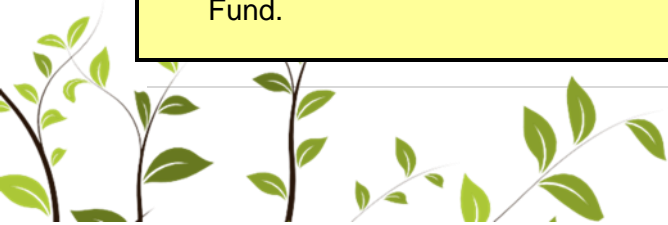




SWOT Analysis

A SWOT analysis is a management critique to identify Strengths, Weaknesses, Opportunities and Threats to help shape future improvements.

STRENGTHS <ul style="list-style-type: none">• Strong, active community groups• Nature status and huge ecological importance within the borough• Strong relationships with the Crane Valley Partnership and Friends of the River Crane Environment.• Community Orchard with veteran trees• Active social media page• Good partnership working with London borough of Richmond.• Forms part of the wider Crane Valley Catchment improvement plan.• Support from Lampton Services GreenSpace Countryside Rangers.• Entrance works are inviting users into the space.• Seating provision via picnic tables which are well liked by users.• Wood carving and bug hotel• Orchard developed near entrance, providing free food provision• Improvements in the conditions of infrastructure including bins and benches on site.• New signage installed• Woodland works, promoting bat habitat• Increase the connectivity of the River Crane Corridor e.g., new footpaths from Pevensey to Brazil Mill Woods.	WEAKNESSES <ul style="list-style-type: none">• Lack of facilities on site• Additional signage needed i.e. highlighting natural features and planting.• Wildflower meadow requires maintenance.
OPPORTUNITIES <ul style="list-style-type: none">• Natural England Countryside Stewardship grant such as for the orchard.• Obtain Local Nature Reserve Designation• Potential for key Conservation programmes e.g., Tern Island, Bat habitats and Kingfisher channels• Increase in social engagement and green activities with local community and volunteer groups.• Develop cross boundary partnerships with London Borough of Richmond• Improve current signage and access points.• Interpretation boards to exhibit wildlife and heritage through Thriving Communities Fund.	THREATS <ul style="list-style-type: none">• Antisocial behaviour• Wildfires• Fly tipping• Biosecurity• Climate change: disease, pests, invasive species, droughts, flooding• Damage to signage• Dog fouling• Motorbikes• Accessibility for wheelchairs on main entrance





How do we get there?

Vision & Objectives

Vision for Pevensey Road Local Nature Reserve:

“The Pevensey Road Green Gym Rangers, FORCE (Friends of the River Crane Environment, the London Borough of Hounslow and Greenspace will work together to create and maintain an exemplary nature reserve for community involvement and enjoyment which is beautiful, wildlife friendly, sustainable, resilient to climate change, safe and accessible to all.”

Key objectives for Pevensey Road LNR are:

- To continue to work closely with the Friends and Volunteer group and other users of the facilities to adequately maintain and improve the facilities.
- To ensure that Pevensey Road LNR is a place that is secure, safe to use and is clean and well maintained.
- To ensure that the management of the landscape maintains the heritage character of the park.
- To ensure that the park is promoted and managed to provide a high-quality service for the people using it.
- To continue to encourage and promote community involvement in the management of the park.
- To ensure that the management of the park protects and enhances the biodiversity of the site and borough.
- To promote health and well-being.
- Creating opportunities for connecting green spaces for wildlife and increasing the boroughs ecological resilience and connectivity





Meeting the Green Flag Award Criteria



Management of Pevensey Road LNR

This sets out guidelines and general principles to be followed in delivering the vision and objectives outlined above.

We value diversity and are committed to delivering a service that puts equality of opportunity as a priority. Management of Pevensey Road LNR needs to deliver high standards of maintenance of all aspects of the soft and hard landscaping of Pevensey Road, the management of habitats and the outdoor education programme, within existing revenue budgets and through capital infrastructure funding opportunities.

Delivery Partners

The Council works pro-actively with the Pevensey Road Green Gym Rangers and with FORCE in consulting with local people regarding their views of the facilities and any impact that is made on their lives. Continuing this working is high priority in relation to the management of the countryside site.

GS are responsible for maintaining all the parks and open spaces within the LBH Parks Service. Maintenance is carried out by the contractors' operatives who have the necessary skills to achieve high and consistent horticultural standards. We also work with environmental volunteering groups, such as the Environmental Champions and others, see the "Community Involvement" section below for more information.





A Welcoming Place

The following management regimes all play a part in ensuring that Pevensey Road continues to be a welcoming area.

Graffiti Removal

As a part of our aim to make the borough safe, green, and clean we are committed to reducing and removing graffiti. The site will be regularly inspected for graffiti. All graffiti will be removed within 7 days of notification, where the graffiti is racist or offensive it will be removed within 24 hours of notification.

Signage

Park signage will be kept clean and is regularly inspected, any repairs will be carried out promptly. For more information, please refer to the “Marketing Section” below.

Pathways

All paths and hard surfaces will be inspected annually. Any necessary repairs will be reviewed, and funding opportunities explored with the aim of rectification as soon possible.

Visibility

Vegetation will be reduced so that where possible site lines are achieved across the site.

Healthy, Safe & Secure

The following management regimes all play a part in ensuring that Pevensey Road continues to be a healthy, safe, and secure place.

Health & Wellbeing

We recognise the benefits that our green spaces can make to the health of our residents.

We are committed to developing active environments that enhance leisure, sport, physical activity and play opportunities in priority areas.

The Councils [Playing Pitch Strategy](#) in particular, identifies needs for sports facility improvements and sets out priority projects for delivery in partnership with key stakeholders. We work with Council services to ensure that our approach supports the broader Council strategies around health and wellbeing and together with Active Travel team, Leisure Services, Transport, Public Health, Community Development team and the local community we aim to deliver these improvements.


Useful Links:

- [Health and Wellbeing Strategy 2023-26](#)
- [Data Hub](#)

Healthy Hounslow

Healthy Hounslow is a partnership between several organisations supporting people in leading healthier lifestyles; to become more active, eat well and stop smoking. The partners that make up Healthy Hounslow are Hounslow Council, West London Trust, Feltham & Bedfont Primary Care Network, MoreLife, Maximus/BeeZee and Lampton Leisure. The services and support offered by Healthy Hounslow are: Smoking cessation, Health and wellbeing coaching, Healthy weight management, Exercise on referral, Cook and eat sessions, and Community NHS Health Checks.

You can find out all about Healthy Hounslow at our website www.healthyhounslow.co.uk



Move More Hounslow Activity Map

- Available online to be [here](#).
- Map shows most parks in the borough that have a multitude of free activities available.



Site Safety

All GS staff and contractors play an important role in terms of a visible staff presence. All are uniformed and where necessary will wear highly visible clothing. All works will have been risk assessed to ensure the highest level of public safety.

Control of Dogs

Most dog owners act responsibly and keep their pets under control. However, the council continues to receive comments and complaints from residents about the behaviour of some dogs and irresponsible dog owners within parks and open spaces.

In response to this, the council is holding a public consultation process to gather residents' opinions about a variety of dog control related issues. The feedback will help us decide whether to introduce a dog control public space protection order (PSPO).

PSPOs are aimed at ensuring public spaces can be enjoyed free from anti-social behaviour. They are not about stopping the responsible use of public spaces - but they do provide councils with a tool to tackle persistent issues that are damaging their communities. For more information on the status and findings from the dog PSPO consultation please see the webpage [here](#).

Pevensey Road LNR welcomes responsible dog owners, and to respect that the area is managed to promote nature conservation.



Community Safety

Hounslow Community Safety Partnership (HCSP) is responsible for reducing crime, disorder, and substance misuse in the London Borough of Hounslow. Along with other supporting partners, HCSP brings together key local agencies including:

- London Borough of Hounslow – Safer Communities Team
- Metropolitan Police Service (Hounslow Division)
- Hounslow district of the National Probation Service
- Hounslow NHS Trust
- London Fire and Emergency Planning Authority
- www.hounslow.gov.uk/community-safety

The Council's Enforcement Team have responsibility for overseeing Community Safety in the boroughs' parks and open spaces. They walk through parks to show presence and work with the Parks Team and GS to target regular occurrences of ASB. Occasionally a joint task force operation including those above is required i.e., rough sleeping, food dumping, drinking and drug misuse.

In 2024, Hounslow Council established a Violence Against Women and Girls (VAWG) Steering Group focused on addressing VAWG issues in parks and open spaces. This group identifies short term and long term strategies and opportunities for partnership development. Key approaches include clearing sightlines, encouraging natural surveillance, and fostering a sense of ownership within these spaces through vegetation removal, raising tree canopies, encouraging volunteering in parks, and organising police walk and talks. The team have also been working closely with:

1. London Borough of Hounslow – Domestic Violence Reduction Unit
2. London Borough of Hounslow – Rough Sleepers Unit

Additionally, they contribute to the WA – BCU (West Area – Borough Command Unit) meetings, which include boroughs of Hounslow, Hillingdon, and Ealing.

Well Maintained & Clean

The following regimes are designed to ensure that Pevensey Road LNR is clean and well maintained.

Grass Maintenance

GS employ several different management approaches to maintain grass areas within our parks and open spaces. Generally, grass areas are managed either as amenity grassland, rough grassland, or as wildflower meadow. Within many of our larger parks, the grass is left uncut as part of the annual No Mow May campaign which was also referred to as [Hounslow's Natural Summer](#) in 2024. For more information see the Council's webpage [here](#).

Pevensey Road LNR consists of a mosaic of different habitats, with areas of wildflower meadow and other rough grassland areas.

Rough Grassland

Rough grassland consists of areas which are cut less frequently generally 2-3 times a year. These are usually areas which are less accessible to the public and help support beneficial insects and small mammals, as well as protect features such as boundaries, hedges, and ponds.

Wildflower Meadows

Wildflower meadows are areas which are actively managed and promoted as wildlife areas. They are suitably prepared, sown and protected by GS, to ensure they establish and flourish to help promote pollinators, and to increase the biodiversity within the open space.

Our meadows provide a rich floral display during spring and summer with plants including Ox-eye daisy, Common Birds-foot-trefoil, Black Knapweed, Field Scabious, and Yellow Rattle, though there is a change in the mix of species in flower through the months. These flowers are an important source for nectar feeding species.

As part of the council's commitment to invest in green infrastructure, GS help identify additional areas within our parks and open spaces, which can be managed as wildflower meadow, where suitable and in consultation with Friends groups and other stakeholders. For more information about wildflower meadows and how we manage them, please see the Council webpages [here](#).



Trees

Trees are an incredibly significant feature in the boroughs parks and open spaces. They provide a variety of benefits not only to visitors but to the overall environment of an area, creating habitats and providing natural shade. They form an important part of the borough's green infrastructure, and this is reflected within the council's [Green Infrastructure Strategy](#).

Tree Maintenance

To ensure that trees continue to contribute to the landscape it is essential that we think about their health and safety. Trees within parks and open spaces are subject to inspection by suitably qualified and experienced GS Arboriculturists. This is to identify and remedy any unacceptable risks to people using the sites, or the removal of trees that are extensively decayed compromising their structural integrity. Tree pruning is only carried out where necessary for risk management purposes or where formative pruning is necessary; this approach allows Hounslow's parks to retain a natural landscape with well-formed specimens.

Hounslow Council works closely with Friends, Councillors and Lampton Services Greenspace tree team to consider the tree population within Pevensey Road Local Nature Reserve to make improvements and ensure that there is continuity in the way that the trees are managed.

Tree Planting

Between 2020 and 2024 the Council set ambitious tree planting targets, successfully planting over 25,000 new trees and whips in parks and open spaces. This formed one of the main ongoing targets set out in the [Green Infrastructure Strategy](#).

Since 2020 18 trees have been planted in Pevensey Road LNR.

For more information on tree planting locations and species, please see the Council webpages [here](#).

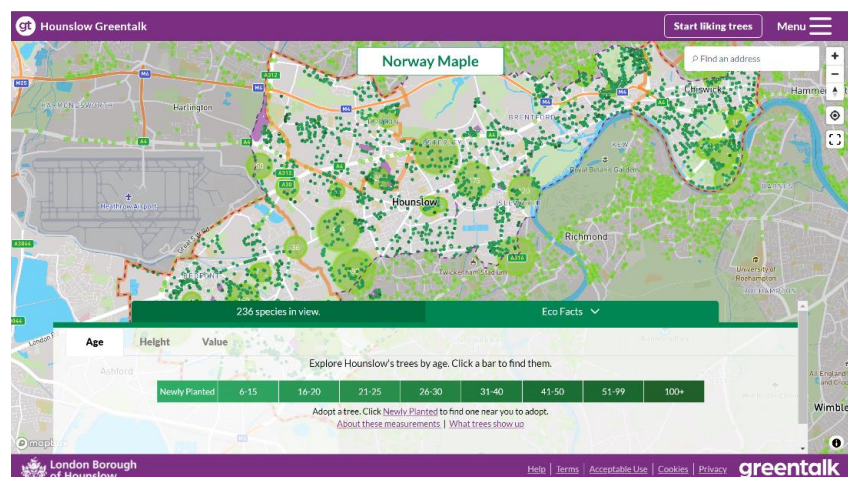
Greentalk

Hounslow Greentalk is an innovative new platform developed as a bespoke resource for Hounslow residents. It has lots of clever features to help explore public trees and make a positive difference to the environment. The platform provides a unique opportunity for Hounslow residents to adopt newly planted trees and help their borough become greener.

Anyone who wants to find out about trees in the borough can use the Greentalk interactive map to explore their area through a tree focused perspective.

Other features include but not limited to:

- Adopting a tree
- Watering notifications
- Green walks
- Tree giveaways



Over 120,000 trees have been mapped, and around 33,000 can be liked by registered users. Liked trees are saved as favourites and can be accessed through the user profile.

The data used to display all the information on Hounslow Greentalk is derived from the council's tree partners who manage the trees in the borough and regularly provide up-to-date information to keep the system as relevant as possible. If a resident is aware of a problem with a tree, Hounslow Greentalk can help them report the exact tree with the right information to the relevant tree partner. For more information, please visit [Hounslow Greentalk](#)



Wetland Management

Sustainable Urban Drainage Design

The Parks team work closely with the Flood Risk team, to help inform on Sustainable Urban Drainage (SUDs) features and design during parks development projects. This approach helps provide ecological and sustainable solutions, to help alleviate flooding within urban areas.

Streams and Rivers

The River Crane is situated alongside Pevensey Road LNR, and the space constitutes an important part of the River Crane corridor. The River Crane is managed by the Environment Agency and the Parks team and GS have a close working relationship with them to ensure its safe management, helping to promote wildlife along its banks.

Cleansing

The collection of litter is extremely important in maintaining the appearance of Hounslow's parks and open spaces and has a direct effect upon how people treat and respect the site. Litter is collected and bins emptied daily by the GS cleansing crews. Any occurrences of fly tipping are cleared by GS within 48 hours of notification, and we work closely with the Enforcement Team to investigate fly tipping issues where possible.

Furniture & Fittings

GS ensure that all furniture is clean and will check benches, notice boards and bins on a regular basis. Items will be cleaned when necessary. Any repairs will

Hard Surfaces

Hard surfaces will be kept clean with litter and leaves removed. Hard surfaces will be maintained in a weed free state. Paths will be kept in a good state of repair and all paths being inspected annually. Any necessary repairs will be reviewed, and funding opportunities explored with the aim of rectification as soon possible. Drains and gulley's are inspected regularly as part of the Annual Infrastructure Survey.

Buildings & Structures

There are no buildings in Pevensey Road LNR aside from the remains of waterworks.





Environmental Sustainability

The following regimes are designed to ensure that Pevensey Road LNR is managed in a sustainable way.

Litter Recycling

All litter is taken to Transport Avenue, the West London Waste Authority site within Hounslow borough. It is then loaded onto trains and taken to an energy waste site in Avonmouth, where it is used as a renewable energy source.

Green Waste Recycling

All green waste is either reused or recycled. Grass clippings are spread and left in situ in the park. Wood chippings are used on flowerbeds to provide a compost and a weed control. Other green waste (shrub pruning etc.) is taken to Transport Avenue Waste Disposal Site, where it is then transferred by road to a composting facility for processing.

Pesticides

As a part of our commitment to ensuring a cleaner and greener Hounslow, the use of chemicals to treat weeds was stopped in 2020. This decision supports the Council's ambitions for a cleaner and greener borough and promotes biodiversity and encourages wildlife. This approach is now fully supported by GS in parks and open spaces, enabling the borough to become even more hospitable to plants and animals.

The use of specific herbicides will only be considered when it is not viable to use non-chemical alternatives, for example, controlling the spread of an invasive species such as Japanese Knotweed, as they are especially damaging to the environment.

Removing the use of herbicides does present operational challenges, herbicides have always been considered a cost-effective solution due to their less labour-intensive results. As such GS continue to assess and review their operational schedules to ensure that an adequate resource and suitable approach is applied to control weed growth.

Peat Use

GS do not use peat, or any peat-based products within Hounslow's parks and open spaces.

Infrastructure

GS follow the Council's procurement guidelines when sourcing replacement or new infrastructure items. This includes prioritising products made from recycled and environmentally and sustainably sourced materials wherever possible and financially feasible.

For example, using trees felled onsite for seating and fence work, and sourcing fibreglass heritage litter bins to replace ironwork bins. Products made from tropical hardwoods and other unsustainable sources are not used.



Fuel, Fleet & Power Tools

Fleet

As part of an ongoing trial within the Lampton group, the GS fleet use an alternative diesel product, Hydrotreated Vegetable Oil Fuel (HVO). HVO meets OEM fuel specifications and is certified to be a 90% CO2 saving on normal diesel. This efficiency is better than current electric vehicles and is a great stop gap to future technologies given the age of the HGV fleet. It is hoped that a switch to HVO will help GS transition to low carbon technologies in a systematic way, giving time to manage various operational constraints limiting early adoption of electric vehicles.



Power Tools

GS are continuously trialing the use of electric power tools as alternative to 2 stroke machinery. They currently utilise several battery powered trimmers and blowers and continue to evaluate the effectiveness and development of the technology, and replacing older traditional machinery as it reaches end of life.





Biodiversity & Heritage

We manage our parks and open spaces by ensuring that where possible we maintain a diverse range of age, species and structure in the canopy, understory and herb layers and aquatic spaces. This is achieved by:

- Managing site specific habitats such as acid grassland, mature veteran trees, rivers, ponds, and woodlands.
- Supporting the borough's wildlife through interventions such as birds and bat houses, stag beetle loggeries, aquatic ledges and educational signage.
- Enhancing existing aquatic and terrestrial habitats to support a diverse range of flora or fauna.
- Exploring opportunities to create new habitats such as wildflower meadows, native hedge planting, aquatic ledges, and copses.
- Consider introducing sympathetic mowing regimes where suitable, for example leaving areas of rough grassland around trees.
- Recognising the effects of climate change e.g., drought, wildfires, floods, disease, biosecurity.
- Prioritising sustainability through resilient planting e.g., drought tolerant trees and plants.
- In 2021 LBH commissioned a baseline report of Invasive species Parks and open spaces portfolio, surveying 195 sites. This information was used to procure a specialist contractor to remove targeted species over a five-year period beginning in April 2025 and running for 5 years. This will seek to eradicate: Japanese Knotweed, Giant Hogweed, and floating Pennywort, and provide advice on how to deal with Himalayan balsam.
- Biosecurity – Anyone responsible for plant supplies must ensure that all plants and associated soil are supplied free of pest and disease at all points in the supply chain. To achieve this, GS consider the latency period and life cycles of all pests and diseases. Special attention to biosecurity is given to imported stock.
- GS procurement will always prioritise suppliers that are able to demonstrate a supply chain audit trail (for example, are part of a recognised Plant Health Assurance scheme) that ensures plant material sourced within the UK is under a regime of biosecurity-aware production and follow nationally agreed good practice guidelines.

The Nature Recovery Action Plan (NRAP) is a part of Hounslow's Greener Borough Framework and was adopted in 2023. A stakeholder board -Nature Recovery Stakeholder Board (NRSB) was launched in February 2024 and is led by the Nature Recovery Manager with quarterly meetings held in various locations across the borough. Currently planning the 4th meeting to be held in February 2025. More information can be found [here](#).

Habitat management

The landscape and habitats at Pevensey Road LNR are actively managed to protect and enhance species on site. This management regime is carried out throughout the year with surveying done principally in the summer months and proactive habitat management activities completed outside breeding/growing seasons in the winter.



Community Involvement

This is crucial to the management of Pevensey Road LNR and will continue to be of the utmost importance.

Friends Groups

The Council and Countryside team works closely with the Friends groups and encourages them in their efforts to apply for grants and to organise volunteer days and events. We also engage with other community groups and third parties to encourage and ensure opportunities for the needs and requirements of a diverse borough population.

The Parks Team provide support for applications to the Council's Thriving Communities Fund. More information about the scheme can be found on the Council webpages [here](#).

Hounslow Friends of Parks Forum holds quarterly meetings. The forums are facilitated by [Habitats & Heritage](#) who are a west London based organisation who help support new and established Friends Groups. The Friends of Parks provides a support network, and to provide opportunities to build relationships that are based on collaboration.

Pevensey Road Green Gym Rangers

Set up originally as a TCV Green Gym in 2013, the group of enthusiastic volunteers now managed and led by the Greenspace Countryside Rangers meet every Monday from 10:45am-2:00pm. The volunteers carry out various projects and habitat improvements on site, including the management of the community orchard, reseedling and management of the wildflower meadows and woodland clearance along the river side. The volunteers and Rangers alike are hugely enthusiastic about the site and carry out works to ensure a safe and relaxing park for visitors to enjoy.

In 2013 The Conservation Volunteers (TCV) set up a weekly Green Gym to carry out habitat work on site in partnership with the Countryside Rangers. The group grew in popularity and the sessions were enjoyed by a varied selection of people from the local community. In 2018 the Countryside Rangers took over the management of the volunteer group and numbers have continued to rise as more people become interested in the conservation efforts on site.

The Countryside team work closely with the community organisations to ensure the park is fully supported as a nature reserve and much valued place of recreation for locals to enjoy. FORCE (Friends of the River Crane Environment) has been hugely supportive of all the work carried out at Pevensey Road Local Nature Reserve and have assisted with habitat management and maintenance tasks running their own volunteer sessions each year.





Volunteering

The Council and GS work with the public to inform, educate, and volunteer in managing habitats through event opportunities and specific projects such as school planting in greenspaces, green gyms, tree planting and habitat surveying. Community involvement and engagement in nature conservation projects helps to increase the health and wellbeing of our residents.

The GS Countryside Team help manage and coordinate several volunteer groups across the borough, working in collaboration with various environmental charities

The Countryside Rangers, the council and Friends of groups working closely with the local community to build relations centering around the park. The Rangers and Friends of River Crane run regular nature and fitness walks in Pevensey LNR. This encourages the local community to take an interest in the park and promotes an interest in conservation and wildlife, as well as living a healthy lifestyle and exploring and making use of the outdoors. The Rangers also liaise closely with the neighbouring college and the students have joined us in the park to carry out litter picks as well as taking part in a tree planting session in the wet woodland. We hope to continue strengthening this relationship through the year and look forward to working with other schools in the borough as well.

The Council also have an Environmental Champions scheme, more information is available on the Councils website [here](#).

Marketing

Promotion and marketing of Pevensey Road LNR is carried out by means of a range of measures to ensure that local people and visitors to the borough are aware of the facility.

Entrance Signage

A Pevensey Road Local Nature Reserve sign is to be commissioned in 2024/2025 to reflect the wildlife and history of site.

Signage Refresh

In 2021 the Parks Team secured significant funding for a borough-wide refresh of all parks and open spaces signage.

The signage was designed in partnership with Friends, local community groups and other stakeholders to ensure they were designed in consultation with our park's users. The design principles focused on inclusivity, using pictograms and maps to illustrate the facilities available in the park and the surrounding area. This programme was completed in Autumn 2024.

For more information and examples of the new signage please visit the Council webpages [here](#).

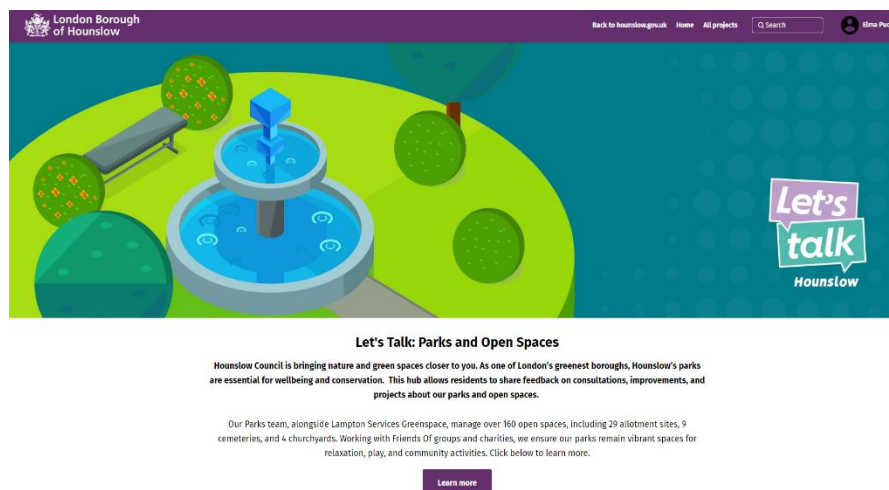
Web & Press

The Council's website has a dedicated Parks and Open Spaces section which can be found [here](#). You can find general information about the service, with useful links, advice, and reporting channels for customers to use.



Parks Hub

The Consultation and Engagement platform Let's Talk Hounslow has a new dedicated Parks Hub which includes current consultations, surveys, and live projects, as well as a digital noticeboard. Since the launch in February 2024, the site has had over 10,000 visitors to the homepage. To view the hub visit [here](#).

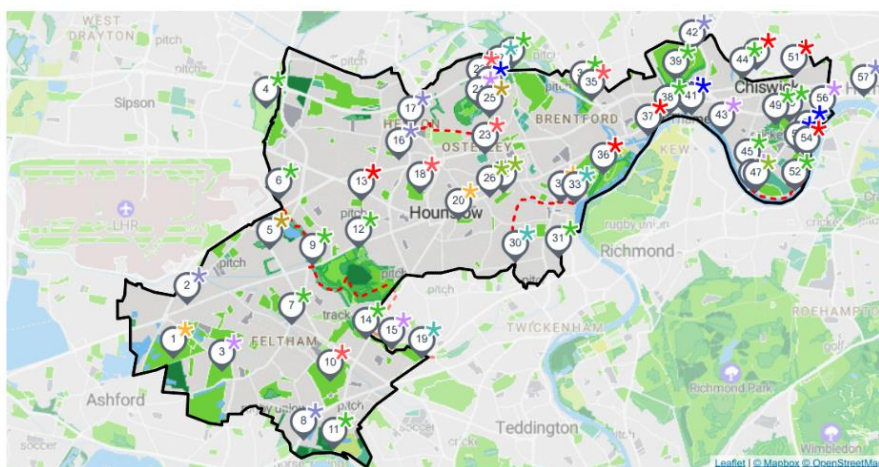


Hounslow also has several other websites which are designed to engage with the wider community about our services and the opportunities available in Hounslow. Please visit, [HounslowConnect](#) and [InHounslow](#) for more information.

- Promotion through the London National Park City www.nationalparkcity.london
- London National Park City Mini-Guide for Hounslow, celebrating Hounslow's great outdoors [Hounslow's Mini Guide](#)

LONDON NATIONAL PARK CITY Hounslow Mini-Guide*

LONDON
NATIONAL
PARK CITY
IS OPEN*



Welcome to the first London National Park City Mini-Guide for Hounslow, celebrating Hounslow's great outdoors. Use it to find places to explore, play, or simply sit; groups to join and paths to walk; activities on land or water to try. Get there on foot, by bicycle or public transport.



The Council also has an active social media presence on [Facebook](#) and [X](#) with the handle @LBofHounslow.

To create community awareness for all its facilities the Council regularly produces articles and press releases about activities and facility development. The Council publishes a regular newsletter, Hounslow Matters, which is provided to all residents and includes news and information about our services, including parks and open spaces. To download the latest publication please follow the link [here](#).

To find out more about Pevensey Road LNR visit: www.facebook.com/PevenseyRoadGG

Events

The Council encourages the hire of parks to appropriate organisations for commercial and community events. Events are held in accordance with the Parks and Open Spaces Events Policy found on the council webpages [here](#).





How do we know we have arrived?

Monitoring & Review

This management plan has been designed as a live document that will guide development in the park over the next five years. Progress will be subject to monitoring and review to measure success and delivery of aims.

Members of the Greenspace Parks team regularly visit the site to monitor progress against the action plan; the results of these visits are then discussed at monthly management and meetings with LBH officers and relevant stakeholders.

LBH Parks Officers work closely with GS and the Friends group to monitor progress and discuss future. This includes:

- Performance against the requirements of the Management Plan
- Provision and analysis of infrastructure surveys
- Provision and analysis of asset surveys
- KPI's and performance monitoring

An annual SWOT analysis will be carried out by all stakeholders and, together with the information gathered from all the monitoring methods will be recorded and fed into annually updated management plans.

GFA Judges feedback and award outcome will enable continuous learning, development and improvement by all partners involved in the award process. Discussed at monthly Parks and GS management meetings and meetings with stakeholder.

Action Planning

Our action plan for Pevensey Road LNR is provided in Appendix 1. This plan is based on an evaluation of the SWOT analysis together with other projects and plans raised by the Friends group. The action plan lists actions and categorises based on timescales and the Green Flag award criteria. The plan will also allocate ownership for each task to the key stakeholders.

Appendix 1

Pevensey Road Local Nature Reserve | Green Flag Award | Action Plan Updated 2025

Key to Action Plan

Green Flag Award Criteria

W	Welcoming Place
H	Healthy, Safe and Secure
VM	Well Maintained and Clean
S	Sustainability
BH	Biodiversity and Heritage
C	Community
Mkt	Marketing
Mgt	Management

Stakeholders

LBH	Parks Service Management Team
GS	Lampton Greenspace
PRGGR	Pevensey Rd Green Gym Rangers
FORCE	Friends of the River Crane Environment
LBRuT	London Borough of Richmond Upon Thames

Delivery Timescales

S	Short term (less than 1 year)
M	Medium term (1 to 3 years)
L	Long term (3+ years)
O	Ongoing

MANAGEMENT ACTION	STAKE-HOLDER	GREEN FLAG CRITERIA	TIME-SCALE	STATUS 2025
Habitat management to support the reintroduction of water voles.	LBH, GS, LBRuT	BH	S	River channel and bank work started January 2023. Has been completed
Improvements to main entrance landscape design	LBH, GS, FORCE, PRGGR	W, WM, C	M	Improvements made to entrance by making it more welcoming through picnic tables, tree planting, bulb planting, lavender planting, wood carving and wildflower meadow. Yet to receive funding/plans to improve new gates.
Resurfacing of existing pathways	GS	W, H, WM	O	
Upgrade to pathway from Pevensey rd. to Calvary tunnel	LBH	WM, C	S	New 450m compact gravel path installed funded by Network Rail.
New main entrance signs to reflect the status as a local nature reserve.	LBH	W, BH	M	Feasibility and design process begun, expected delivery 2025/26
Review signage design in relation to the borough wide signage strategy.	LBH, GS	W, S	M	New signage installed
Anti-Social Behaviour – signage review, continue stakeholder engagement and targeted enforcement	LBH, GS, FORCE, PRGGR	W, H	O	

MANAGEMENT ACTION	STAKE-HOLDER	GREEN FLAG CRITERIA	TIME-SCALE	STATUS 2025
Review Green Waste	GS LBH	H, S	S	Any woodchip generated on site is used on site
Continue to maintain a healthy tree stock with a review of opportunities for new tree planting.	LBH, GS	S, W, WM, BH	M	All tree works are carried out by GS in compliance with UK legislation. Tree planting carried out by Friends of Pevensey Road Open Space
Develop plans for increasing habitats and the biodiversity of the site.	LBH, GS, FORCE, PRGGR, LBRuT	BH	S	Discuss with stakeholders.
Add bird boxes & bat boxes, Bat Surveying, and other site appropriate habitats/surveys	LBH, GS, FORCE, PRGGR	BH	M	We will continue to look for funding and opportunities to install more, including wildlife education workshops/events. 2 bird and 1 bat box installed early 2024. Wildflower meadow, daffodil and wood carving installed.
Continue and expand the work with FORCE/PRGGR and the wider community to promote greening activities.	LBH	C	O	
LBH to facilitate events with Hounslow's parks and open spaces as part of an active community engagement agenda.	LBH	C	O	
LBH to facilitate opportunities for Education, Heritage, and culture at the site. To include a schools education programme	LBH, GS, FORCE, PRGGR	C	M	Program to be produced by GS
Continue to publicise the nature reserve through LBH website, social media platforms and notice board. Also, borough wide campaigns, including achievements, initiatives, and announcements.	LBH	Mkt	O	Ongoing
Support other positive promotion of the nature reserve through various media platforms	LBH, GS, FORCE, PRGGR	Mkt	O	Ongoing
Produce a 5-year biodiversity management plan	LBH, GS, FORCE, PRGGR	BH	M	To commission an extended phase 1 habitat survey when funding becomes available.
Bulb planting sessions with the local community to increase communal engagement in urban greening.	LBH, GS, PRGGR	BH, W, C	L	Design has been created and has been delivered by volunteers.



Appendix 2

Annual Maintenance Work Schedules

The following table provides an overview of the annual maintenance work schedules. All frequencies are subject to seasonal variations, resource, and specific horticultural requirements. They are reviewed annually by the Operations Manager at GS to ensure they remain suitable and reflect any significant site changes. See “*Meeting the Green Flag Criteria*” section for more detailed management information.

Service	Frequency/Management information
GM Summer works (March - October) <i>Amenity grassland cutting</i> <i>Rough grassland cutting</i> <i>Wildflower meadow cutting</i> <i>Hedge & shrub cutting</i>	Managed by the Grounds Maintenance Teams Once every 3 weeks 1-2 cuts per summer season 1-2 cuts per summer season 1 “reduce cut” dependent on horticultural requirements
GM Winter works (October – March) <i>Hedge & shrub cutting</i> <i>Pond clearance</i> <i>Leaf clearance</i>	Managed by the Grounds Maintenance Teams 1 “hard cut” dependent on horticultural requirements As required, dependent upon size and conditions As required, from hard surfaces and grass areas
Cleansing <i>Litter collection & bin emptying</i> <i>Non-offensive graffiti removal</i> <i>Offensive graffiti removal</i> <i>Fly tip removal</i>	Managed by the Cleansing Teams [site specific] Daily, including bank holidays. Within 7 days of notification Within 24 hours of notification Within 48 hours of notification
Infrastructure <i>Cleansing (bins, benches, signs etc).</i> <i>Lighting</i> <i>Buildings</i>	Various teams/management As required, based on visual inspections and reports Inspections and repairs managed by Hounslow Highways All H&S checks conducted, electrical, fire, water, etc.
Trees <i>Tree inspections</i> <i>Tree maintenance</i> <i>Tree watering</i> <i>Tree planting</i>	Managed by the Tree Team Annually Based on previous inspections, prioritised by H&S Summer: May – September (for trees under 3 years) Winter: October – March
Countryside Schedule <i>Site safety checks</i> <i>Conservation management</i> <i>Volunteering sessions</i>	Daily water and fire checks: buoys/banks, BBQs/firebreaks Seasonal dependent on habitat types Frequency dependent on site





Monitoring the Annual Maintenance Work Schedules

Members of the Parks Team conduct site visits to ensure that the work schedules are being adhered to and report issues to GS to resolve where necessary. Customer enquiries relating to maintenance issues are also routinely assessed to ensure they are rectified in a suitable and timely manner.

The Parks Team are currently working with the Ward Improvement Team to develop a new monitoring program, which we expect to be deployed in spring 2025.

The program will rely upon the Land Audit Management System (LAMS), developed by the Association of Public Service Excellence (APSE). This is an industry recognised approach, which many local authorities use to monitor the performance of their park services.

The program will also make use of and refer closely to the guidance provided by Parks for London in their recently updated Green Space Quality Manual. This provides valuable insight and understanding as to “what good looks like” and will help to ensure a consistent approach is taken during routine monitoring.

The new monitoring program will be periodically reviewed to help measure its success in improving the parks services. We expect it to help identify where there are issues and trends in performance to inform how best to deploy resource in the areas which require it the most.

For more information regarding the tools and approach that will be used for the monitoring program, please visit the [APSE LAMS](#) page and download the Parks for London [Green Space Quality Manual](#).



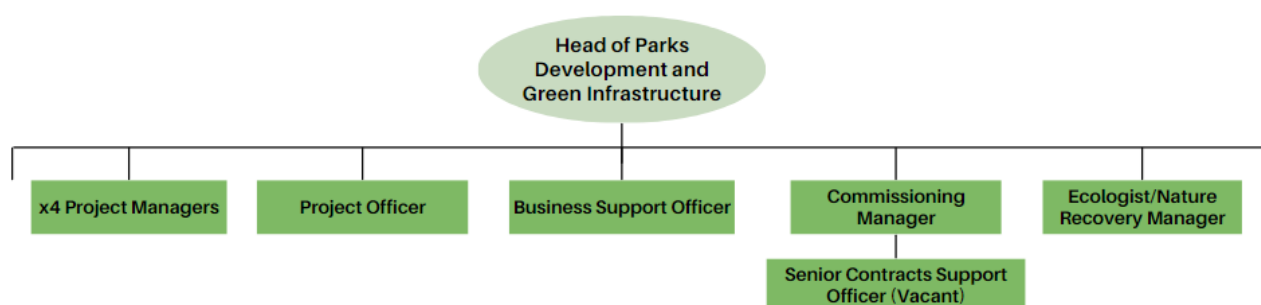
Appendix 3

Management Structure & Responsibilities

Pevensey Road Local Nature Reserve is owned and managed by the LBH and maintained by GS. Information below sets out the management structure and describes the roles and responsibilities of the key personnel involved in managing and maintaining the site.

LBH Parks Service Management Structure

The Environment and Culture Directorate provide the following roles who are responsible for the management, and associated roles, of Hounslow's parks and open spaces:



LBH Head of Parks Development & Green Infrastructure

Senior commissioning role for the management and partnership with GS, senior advisor in relation to parks and open spaces, strategy and policy development, Member's liaison.

LBH Parks Project Managers (x4)

Project development and management, fundraising, community engagement and consultation, implementation, strategy, and policy setting.

Parks Project Officer

Development and delivery of projects, fundraising, community engagement and support Head of Parks.

Commissioning Manager

Supplier performance governance and relationship management, Legal and contracts, Planning/Commissioning, Operational Service delivery and business processes/systems.

Senior Contracts Support Officer

Supplier performance, customer service and casework, community engagement and consultation, project support.

Parks Business Support Officer

Assistance with finance; administration, project support and communications.

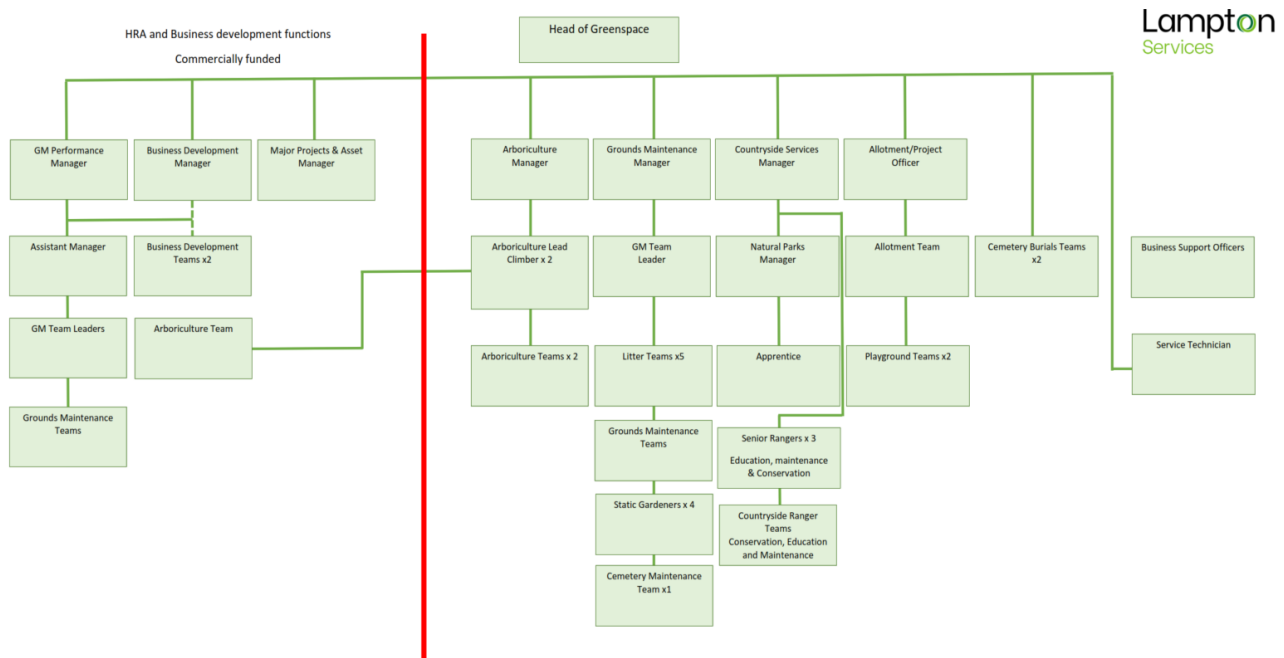
Ecologist & Nature Recovery Manager

Responsible for providing expert ecological advice relating to the management, protection and enhancement of important habitats and species within the borough.



Lampton Services Greenspace Management Structure

The following GS roles are responsible for the management of Hounslow's parks and open spaces:



Head of Service

Responsible for the ground's maintenance service provision. Oversees the delivery of the specification which includes infrastructure.

Projects Manager including the Allotment Service

Responsible for the development of park infrastructure, management of the allotment service, overseeing horticultural standards, schemes, and developments. Main contact for contractors (CDM). Friends and Member liaison.

Countryside Manager

Responsible for the management of the borough's countryside service. This role includes the management of the Ranger team and educational, animal husbandry, environmental and wildlife operations/programs associated with these locations.

Planned Maintenance Manager

Responsible for the management of the operational resources to deliver the ground maintenance services for the parks and open spaces sites.

Performance and Support Officer

Customer Service functions- Freedom of Information (FOI), customer enquiries, councillors' enquiries, and monthly statistics; technical project support.





Tree Team Manager

Responsible for the teams that carry out the inspections and maintenance of the boroughs 85,000 park trees. Oversees all tree planting schemes for the council and community groups in parks. Managing and mapping/recording of invasive species. Planning application guidance to LBH.

Playground Inspectors x2

Visual, operational, and minor repairs of playgrounds. Inspected annually external contractor.

Operational Teams

Grounds maintenance is delivered using mobile teams. These teams provide the Grass cutting, horticultural tasks, general maintenance, litter bin emptying and litter picking.

Business Support Officer

Provides administration for fleet, handles finances and overtime schedules.





Appendix 4

Habitat work is also carried out in line with the Pevensey Road Habitat management plan. Please see table below:

	HABITAT WORK	ECOLOGICAL SURVEYS
January	Willow coppicing on 3-year rotation	Birds
February	Orchard pruning Low level vegetation clearance	Birds
March	Orchard Mulching	Birds
April		Butterfly, Moth, and Reptile
May	Early weed growth, nettle thistle removing	Mammals
June	Invasive species- balsam pulling	wild
July	Invasive species- balsam pulling	-
August	Pond clearance, Scything wildflower meadow	-
September	Scything wildflower meadow	-
October	Harvesting apples, tree thinning in the woodland	Fungi, Birds
November	Managing wildflower meadow, planting bulbs in woodland	Birds
December	Scrub clearance- Virginia Creeper, coppicing hazel on five-year rotation	Birds



London Borough of Hounslow
Hounslow House, 7 Bath Road
Hounslow TW3 3EB
www.hounslow.gov.uk

Tel: 0208 583 5555



**London Borough
of Hounslow**

Lampton
Services
Greenspace